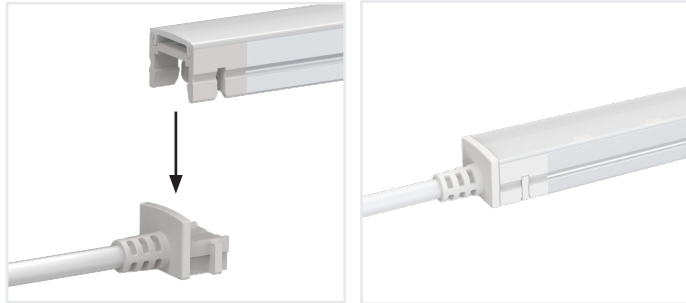
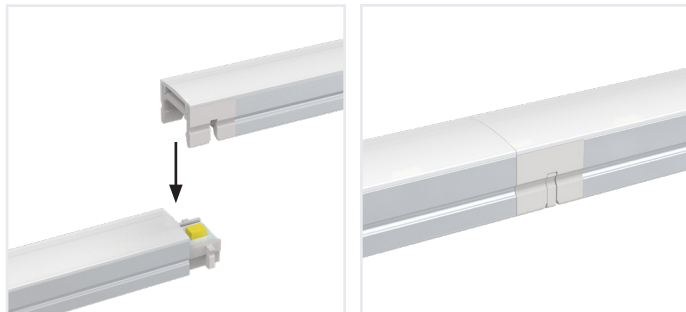


Assembling PolyForm Fixtures **Note: PolyForm is 12V DC - Do Not Connect To 120V AC Power**

1. Snap the front connector of the PolyForm fixture to the wire socket of the plug from the top down.

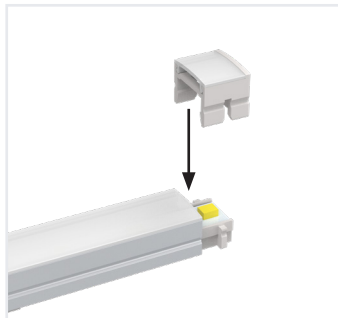


2. Follow this same method to seamlessly link fixtures and connectors to create the desired design.



3. Snap the end cap onto the end of the last fixture.

Plug the DC power cable into the power supply to illuminate the fixture.

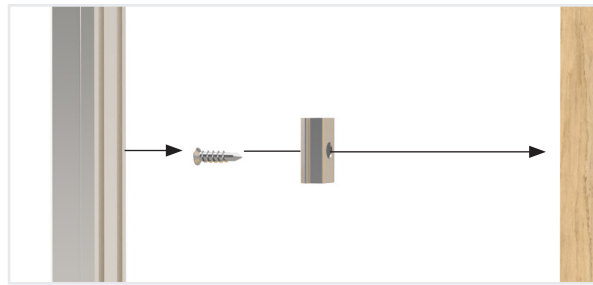


See Next Page For Mounting Instructions

Mounting PolyForm Fixtures

→ Mounting With Clips

1. Measure the PolyForm and trace the length of your design onto the surface in which it will be installed.
2. Use the included screws to attach the mounting clips to the surface where you traced. Ensure that the mounting clips are straight and aligned.
3. Mount the fixtures by snapping the mounting clips onto the grooves on the bottom of the fixtures.

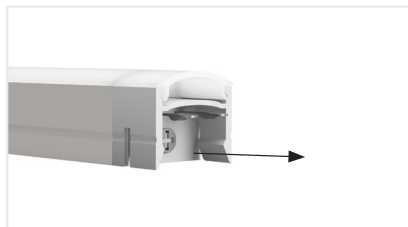


→ Mounting With Magnets

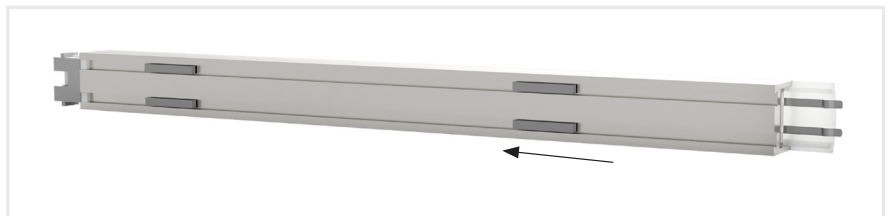
Note: When fixtures are mounted on a metal surface using the magnets, vibration and a buzzing sound may occur when the light is dimmed. This is NOT a result of the lighting components.

1. Remove the screw from the front of the PolyForm fixture. Slide the connection cap off. (This is the receiving end where the PCB/diodes are not visible.)

Note: Be sure to not bend the metal connection prongs.



2. Slide the 2 pairs of magnets into the grooves on the bottom of the fixture. Distribute them evenly across the fixture.



3. Carefully reinstall the connection cap and screw. Mount the PolyForm to a metal surface.

