

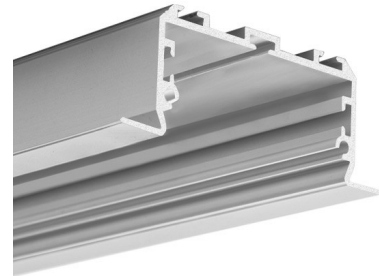
PRODUCT DESCRIPTION

- Simple mounting that does not require plastering and painting the surface afterwards
- Possible to obtain a line of light

FINISH :

Silver anodized

White



Fill empty fields

Product nr.	
Fixture type	
Company	
Job name	
Date	

TECHNICAL SPECIFICATION

Application

- for creating serviceable straight and sectioned LED lighting fixtures, mounted in drywal

Mounting

- uses dedicated KMA springs

Additional information

- line of light obtainable with the LIGER-50 cover and LED strips with a minimum of (36 LED/ft. / 120 LED/m)
- designed for up to four (0.39" / 10mm) wide LED strips
- the cover is evenly illuminated with four LED strips, with fewer strips shadows appear on the cover
- LARKO-50 extrusion is equipped with ZM sockets on the inside and outside (ZM connectors used to connect extrusions lengthwise are easily accessible even after mounting the extrusion in the ceiling, external sockets are used to mount KMA springs)
- recommended number of springs (assembled in pairs) depending on the length of the extrusion:

Extrusion length	39.4" / 1m	78.7" / 2m
Number of KMA springs	6	10

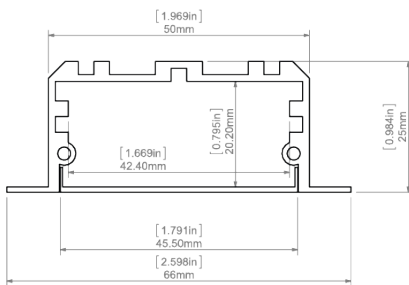
- the groove cut out in the drywall to accommodate the extrusion should be (2.0"-2.2" / 51mm-56mm) wide
- when mounted in double drywall, the extrusion does not interfere with the structure

Possibility of making a linear fixture with IP65 protection, which means the fixture is dustproof and waterproof in contact with water jets.

AVAILABLE LENGTHS

Ref. nr.	surface finish	available lengths
C0756ANODA_1	Silver anodized	39.4"
C0756ANODA_2	Silver anodized	78.75"

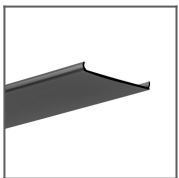
TECHNICAL DRAWING



RELATED PRODUCTS

COVERS

BLACK



LIGER-50 black
Cover
Ref: 17089

FROSTED COVERS



LIGER-50 frosted
Cover
Ref: 17086

END CAPS

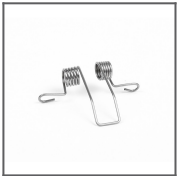
REGULAR END CAPS



LARKO-50 grey
End cap
Ref: 24298

ACCESSORIES

FASTENERS & MOUNTING ACCESSORIES

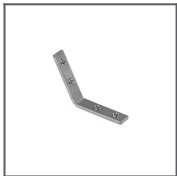


KMA Spring
Ref: 00838

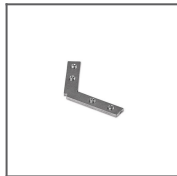
COMPONENTS FOR CONNECTING FIXTURES



ZM-180
Connector
Ref: 42717



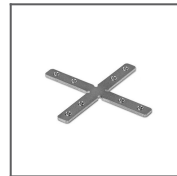
ZM-PION-120
Connector
Ref: 42320



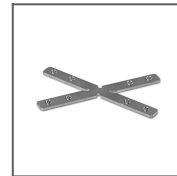
ZM-120-G
Connector
Ref: 42308



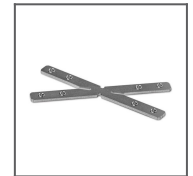
ZM-Y120-G
Connector
Ref: 42336



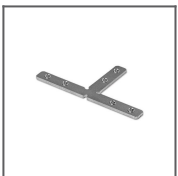
ZM-X90-G
Connector
Ref: 42334



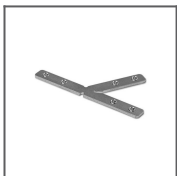
ZM-X60-G
Connector
Ref: 42332



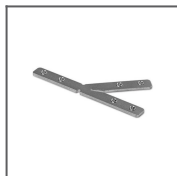
ZM-X45-G
Connector
Ref: 42330



ZM-T90-G
Connector
Ref: 42328



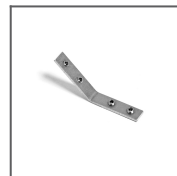
ZM-T60-G
Connector
Ref: 42326



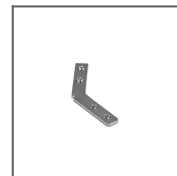
ZM-T45-G
Connector
Ref: 42324



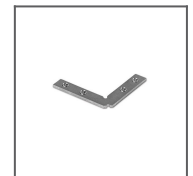
ZM-PION-45
Connector
Ref: 42314



ZM-PION-135
Connector
Ref: 42719



ZM-135-G
Connector
Ref: 42310



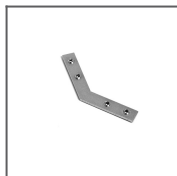
ZM-90-G
Connector
Ref: 42306



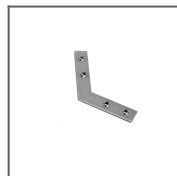
ZM-60-G
Connector
Ref: 42304



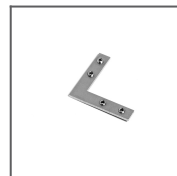
ZM-45-G
Connector
Ref: 42338



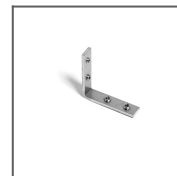
ZM-135
Connector
Ref: 42720



ZM-120
Connector
Ref: 42728



ZM-90 Connector
Ref: 42716



ZM-PION-90
Connector
Ref: 42718



ZM-MINI-180
Connector
Ref: 44501