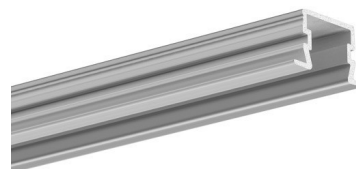


**PRODUCT DESCRIPTION**

- Invisible groove edge
- Small bending radius
- Wide range of accessories

**FINISH :**

- Silver anodized
- Black anodized
- White



Fill empty fields

Product nr.	
Fixture type	
Company	
Job name	
Date	

**TECHNICAL SPECIFICATION**

**Application**

- furniture, main and decorative lighting.

**Mounting**

- recessed, with mounting adhesive or double-sided adhesive tape,  
- the cover is cut to the length of the profile.

**Additional information**

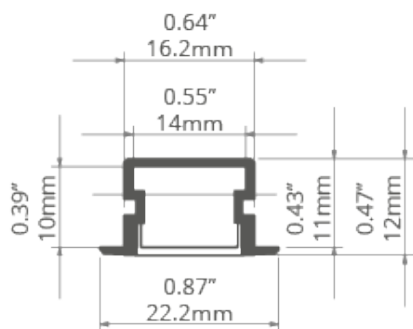
- the profile fits in the thickness a drywall panel, i.e.12 mm / 0,47" (after cutting the panel, the profile does not protrude above it),
- dimensions of the groove for recessing the profile: 18 mm / 0,70" (width) x 13 mm / 0,51" (depth)
- line of light obtainable with a LIGER cover and LED strip with a minimum of 120 LED/m
- the bottom of the profile is 14.2 mm / 0,56" wide, which allows the use of RGBW strips

**AVAILABLE LENGTHS**

Ref. nr.	surface finish	available lengths
C1588ANODA_1	Silver anodized	39.4"
C1588ANODA_2	Silver anodized	78.7"

Ref. nr.	surface finish	available lengths
C1588ANODA_3	Silver anodized	118.11
C1588K7_1	Black anodized	39.4"
C1588K7_2	Black anodized	78.7"
C1588K7_3	Black anodized	118.11"
C1588L9010OD_2	White	78.75"

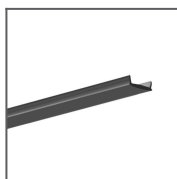
## TECHNICAL DRAWING



## RELATED PRODUCTS

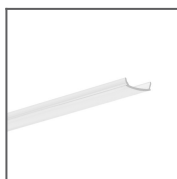
### COVERS

#### BLACK

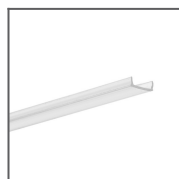


LIGER Cover  
black  
Ref: 17040

#### CLEAR COVERS

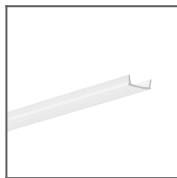


KA-PRO Cover  
clear  
Ref: 17065

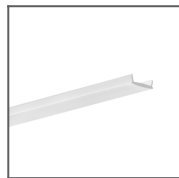


KA Cover clear  
Ref: 17036

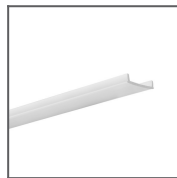
#### FROSTED COVERS



KA Cover frosted  
Ref: 17035



LIGER Cover  
frosted  
Ref: 17037 (Old  
ref. 17031)



KA-PRO Cover  
frosted  
Ref: 17064

## END CAPS

### REGULAR END CAPS



PDS-NK white  
End cap  
Ref: 24402



PDS-NK-OTW  
grey End cap  
Ref: 24339



PDS-NK grey End  
cap  
Ref: 24338



PDS-NK black  
End cap  
Ref: 24342



PDS-NK-OTW  
black End cap  
Ref: 24343



PDS-NK-OTW  
white End cap  
Ref: 24404

## ACCESSORIES

### ADDITIONAL ITEMS



6x1.2 Gland  
Ref: 00802