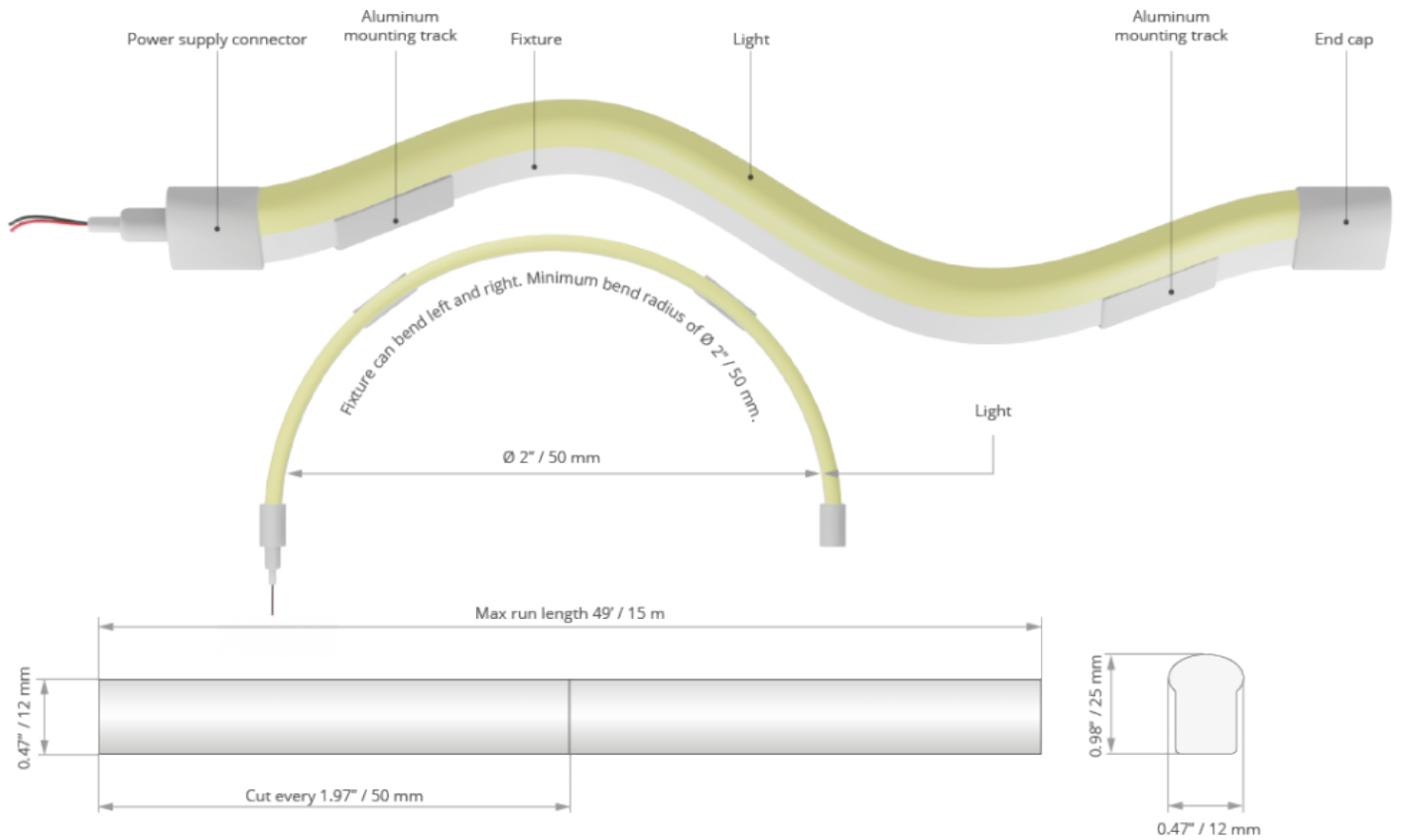




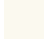
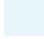


- UL Listed
- 3-Step MacAdam's ellipse, single binning
- L70- Over 40,000 hours
- Reverse voltage protection
- Minimum 2oz copper PCB

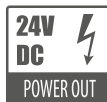


\* Custom lengths must be made by the factory to maintain the UL listing

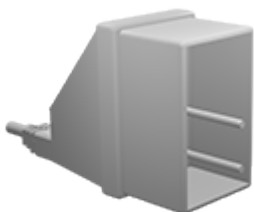
## TECHNICAL DATA

Model	IP protection	Power consumption	Color temperature	Lumen output	Diode QTY per foot	Input voltage	Beam Angle	Max run length	LED width
K-NF-27-1220-24V-5M	IP 67	3 W/ft	2700 K	161 lm/ft	38 pcs/ft	24 V	180 °	16'4"	14 mm
K-NF-27-1220-24V-10M	IP 67	3 W/ft	2700 K	161 lm/ft	38 pcs/ft	24 V	180 °	32'	14 mm
K-NF-27-1220-24V-15M	IP 67	3 W/ft	2700 K	161 lm/ft	38 pcs/ft	24 V	180 °	49'	14 mm
K-NF-30-1220-24V-5M	IP 67	3 W/ft	3000 K	162 lm/ft	38 pcs/ft	24 V	180 °	16'4"	14 mm
K-NF-30-1220-24V-10M	IP 67	3 W/ft	3000 K	162 lm/ft	38 pcs/ft	24 V	180 °	32'	14 mm
K-NF-30-1220-24V-15M	IP 67	3 W/ft	3000 K	162 lm/ft	38 pcs/ft	24 V	180 °	49'	14 mm
K-NF-40-1220-24V-5M	IP 67	3 W/ft	4000 K	172 lm/ft	38 pcs/ft	24 V	180 °	16'4"	14 mm
K-NF-40-1220-24V-10M	IP 67	3 W/ft	4000 K	172 lm/ft	38 pcs/ft	24 V	180 °	32'	14 mm

Model	IP protection	Power consumption	Color temperature	Lumen output	Diode QTY per foot	Input voltage	Beam Angle	Max run length	LED width
K-NF-40-1220-24V-15M	IP 67	3 W/ft	4000 K 	172 lm/ft	38 pcs/ft	24 V	180 °	49'	14 mm
K-NF-50-1220-24V-5M	IP 67	3 W/ft	5000 K 	209 lm/ft	38 pcs/ft	24 V	180 °	16'4"	14 mm
K-NF-50-1220-24V-10M	IP 67	3 W/ft	5000 K 	209 lm/ft	38 pcs/ft	24 V	180 °	32'	14 mm
K-NF-50-1220-24V-15M	IP 67	3 W/ft	5000 K 	209 lm/ft	38 pcs/ft	24 V	180 °	49'	14 mm
K-NF-BLUE-1220-24V-5M	IP 67	3 W/ft	Blue 	28 lm/ft	38 pcs/ft	24 V	180 °	16'4"	14 mm
K-NF-BLUE-1220-24V-10M	IP 67	3 W/ft	Blue 	28 lm/ft	38 pcs/ft	24 V	180 °	32'	14 mm
K-NF-BLUE-1220-24V-15M	IP 67	3 W/ft	Blue 	28 lm/ft	38 pcs/ft	24 V	180 °	49'	14 mm
K-NF-GREEN-1220-24V-5M	IP 67	3 W/ft	Green 	136 lm/ft	38 pcs/ft	24 V	180 °	16'4"	14 mm
K-NF-GREEN-1220-24V-10M	IP 67	3 W/ft	Green 	136 lm/ft	38 pcs/ft	24 V	180 °	32'	14 mm
K-NF-GREEN-1220-24V-15M	IP 67	3 W/ft	Green 	136 lm/ft	38 pcs/ft	24 V	180 °	49'	14 mm
K-NF-RED-1220-24V-5M	IP 67	3 W/ft	Red 	72 lm/ft	38 pcs/ft	24 V	180 °	16'4"	14 mm
K-NF-RED-1220-24V-10M	IP 67	3 W/ft	Red 	72 lm/ft	38 pcs/ft	24 V	180 °	32'	14 mm
K-NF-RED-1220-24V-15M	IP 67	3 W/ft	Red 	72 lm/ft	38 pcs/ft	24 V	180 °	49'	14 mm
K-NF-YELLOW-1220-24V-5M	IP 67	3 W/ft	Yellow 	214 lm/ft	38 pcs/ft	24 V	180 °	16'4"	14 mm
K-NF-YELLOW-1220-24V-10M	IP 67	3 W/ft	Yellow 	214 lm/ft	38 pcs/ft	24 V	180 °	32'	14 mm
K-NF-YELLOW-1220-24V-15M	IP 67	3 W/ft	Yellow 	214 lm/ft	38 pcs/ft	24 V	180 °	49'	14 mm



## ACCESSORIES



Ref. 69006 Power supply connector with (78" / 2m) lead K-NF-1220-24 series



Ref. 69007 Power supply connector with (78" / 2m) lead exiting the bottom K-NF-1220-24 series



Ref. 69008L Power supply connector with (78" / 2m) lead exiting the left side K-NF-1220-24 series



Ref. 69008R Power supply connector with (78" / 2m) lead exiting the right side K-NF-1220-24 series



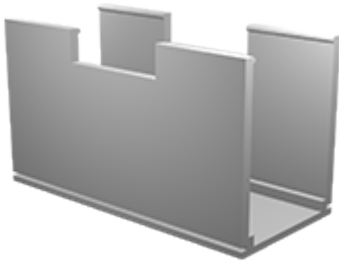
Ref. 69009 L connector K-NF-1220-24 series



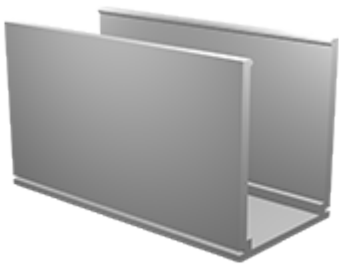
Ref. 69010 NF strip to strip connector K-NF-1220-24 series



Ref. 69011 End cap K-NF-1220-24 series



Ref. 69012 (39.4" / 1m) Aluminum mounting track w/ 3 mounting clips included K-NF-1220-24 series



Ref. 69013 (1.38" / 3.5cm) Aluminum mounting track w/ 1 mounting clip included K-NF-1220-24 series