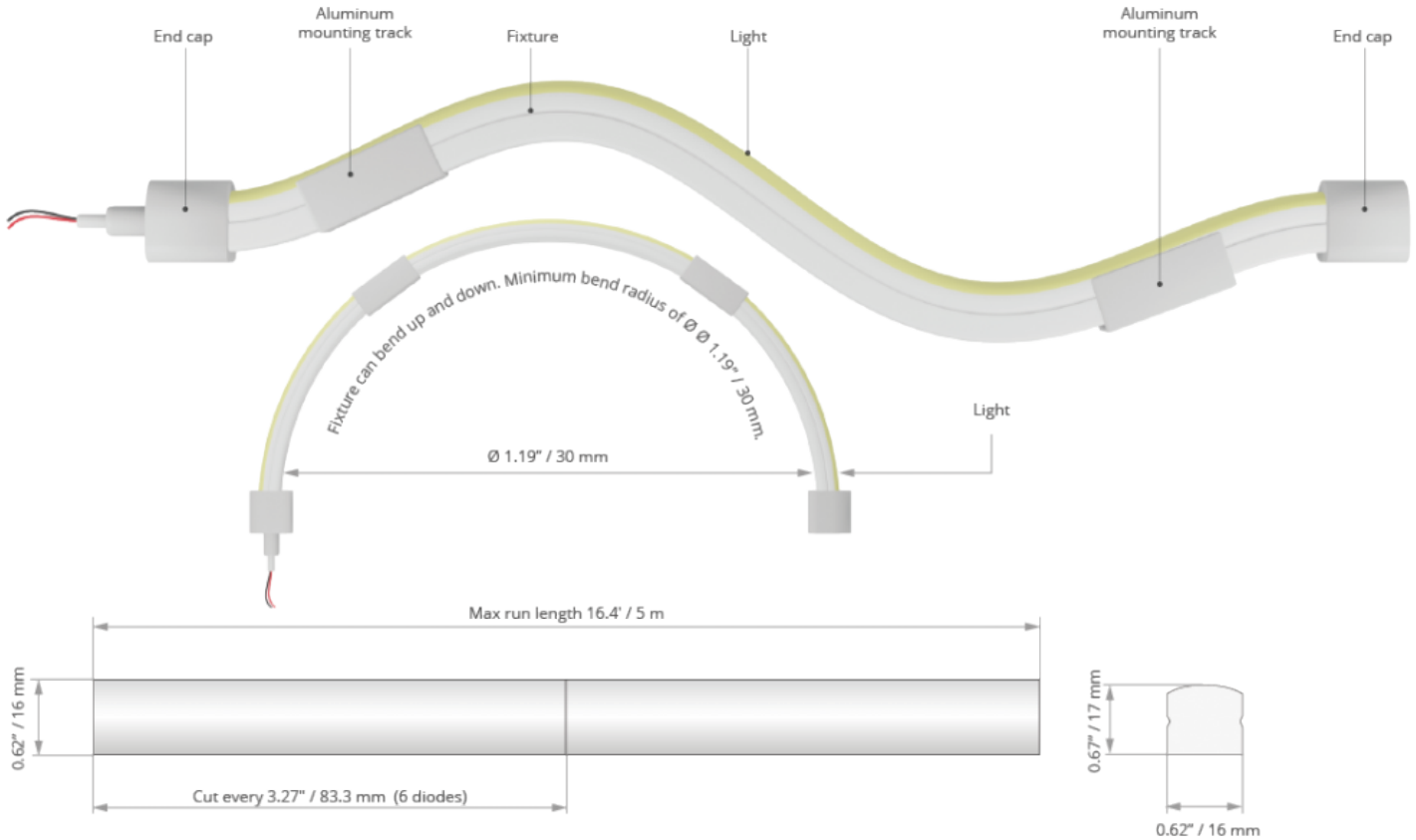


- L70- Over 40,000 hours
- Reverse voltage protection
- Minimum 2oz copper PCB



\* Custom lengths must be made by the factory to maintain the UL listing

## TECHNICAL DATA

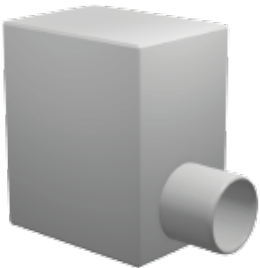
Model	IP protection	Power consumption	Color temperature	Lumen output	Diode QTY per foot	Input voltage	Beam Angle	Max run length	LED width
K-NF-RGBW35-1730V-24V-5M	IP 67	5.3 W/ft	3500 K	139 lm/ft	22 pcs/ft	24 V	113 °	16'4"	16 mm
			Blue	73 lm/ft					
			Green						
			Red						



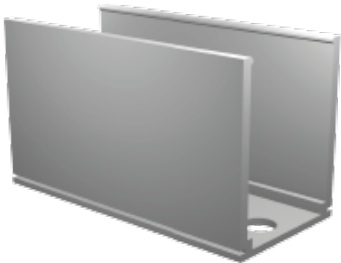
## ACCESSORIES



Ref. 69025 End cap for K-NF-RGBW35-1730V-24V series



Ref. 69026 End cap with hole for K-NF-RGBW35-1730V-24V series



Ref. 69027 1.37" / 35 mm aluminum mounting track w/ 1 mounting clip for K-NF-RGBW35-1730V-24V series