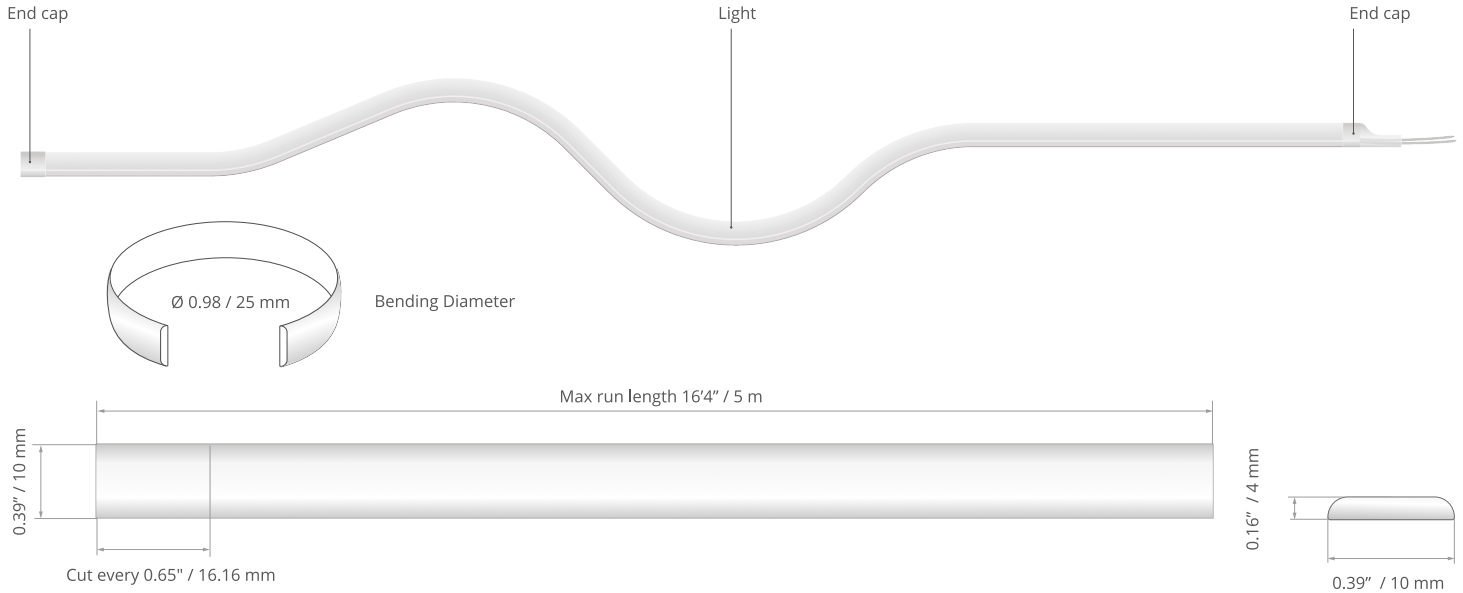









- Clean line of light
- Only 4 mm tall
- Super short cutting sections



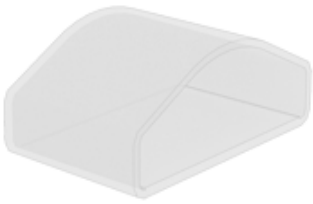
* Custom lengths must be made by the factory to maintain the UL listing

TECHNICAL DATA

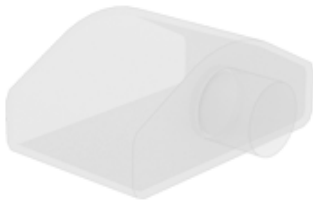
Model	IP protection	Power consumption	Color temperature	Lumen output	Diode QTY per foot	Input voltage	Beam Angle	Max run length	LED width
K-NFM-22-1920-24V-5M	IP 65	5.8 W/ft	2200 K 	298 lm/ft	128 pcs/ft	24 V	120 °	16'4"	10 mm
K-NFM-25-1920-24V-5M	IP 65	5.8 W/ft	2500 K 	380 lm/ft	128 pcs/ft	24 V	120 °	16'4"	10 mm
K-NFM-27-1920-24V-5M	IP 65	5.8 W/ft	2700 K 	378 lm/ft	128 pcs/ft	24 V	120 °	16'4"	10 mm
K-NFM-30-1920-24V-5M	IP 65	5.8 W/ft	3000 K 	344 lm/ft	128 pcs/ft	24 V	120 °	16'4"	10 mm
K-NFM-35-1920-24V-5M	IP 65	5.8 W/ft	3500 K 	435 lm/ft	128 pcs/ft	24 V	120 °	16'4"	10 mm
K-NFM-40-1920-24V-5M	IP 65	5.8 W/ft	4000 K 	418 lm/ft	128 pcs/ft	24 V	120 °	16'4"	10 mm
K-NFM-50-1920-24V-5M	IP 65	5.8 W/ft	5000 K 	457 lm/ft	128 pcs/ft	24 V	120 °	16'4"	10 mm



ACCESSORIES



Ref. 69041 End cap for K-NFM-1920-24V series



Ref. 69042 End cap with hole for K-NFM-1920-24V series