



- UL Listed
- Evenly illuminates in 360°
- Fully bendable with excellent flexibility
- Perfect for creating stylistic, suspended fixture arrangements



* Custom lengths must be made by the factory to maintain the UL listing

TECHNICAL DATA

Model	IP protection	Power consumption	Color temperature	Lumen output	Diode QTY per foot	Input voltage	Beam Angle	Max run length	Diameter
K-NFR-27-1600-24V-5M	IP 65	4.88 W/ft	2700 K	359 lm/ft	102 pcs/ft	24 V	360 °	16'4"	0.91 "
K-NFR-30-1600-24V-5M	IP 65	4.88 W/ft	3000 K	384 lm/ft	102 pcs/ft	24 V	360 °	16'4"	0.91 "
K-NFR-40-1600-24V-5M	IP 65	4.88 W/ft	4000 K	395 lm/ft	102 pcs/ft	24 V	360 °	16'4"	0.91 "
K-NFR-50-1600-24V-5M	IP 65	4.88 W/ft	5000 K	402 lm/ft	102 pcs/ft	24 V	360 °	16'4"	0.91 "

-4°F to 140°F
OPERATING TEMPERATURE

DIMMABLE

RADIATION

65
IP

IK08

24V DC
POWER OUT

RoHS COMPLIANT

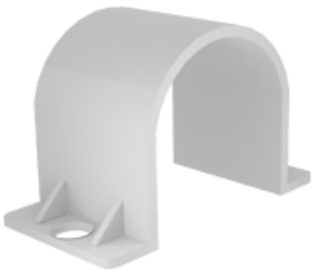
ACCESSORIES



Ref. 69037 End cap for K-NFR-1600-24V series



Ref. 69038 End cap with hole for K-NFR-1600-24V series



Ref. 69039 Surface mounting bracket for K-NFR-1600-24V series



Ref. 69040 Suspension clip for K-NFR-1600-24V series

RELATED PRODUCTS

ACCESSORIES

FASTENERS & MOUNTING ACCESSORIES



Stainless Steel
Wire 39.4" (1m)
Ref: 1397



W-KG Fastener
Ref: 1559