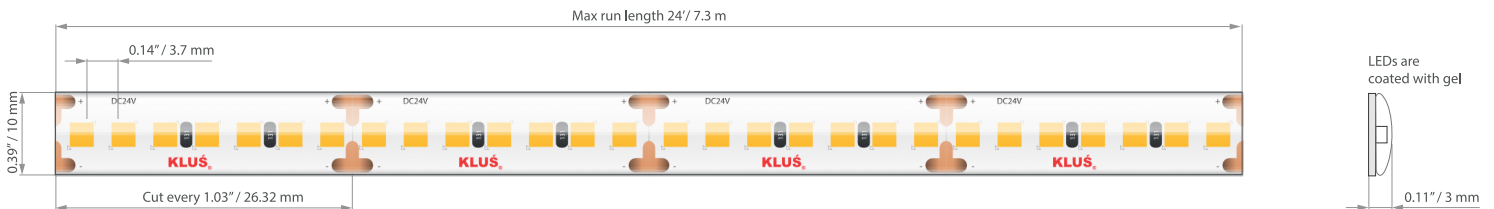


- UL Listed
- CRI 90+
- 2-Step MacAdam's ellipse, single binning
- L70- Over 50,000 hours
- R9 up to 81
- Reverse voltage protection
- Minimum 2oz copper PCB



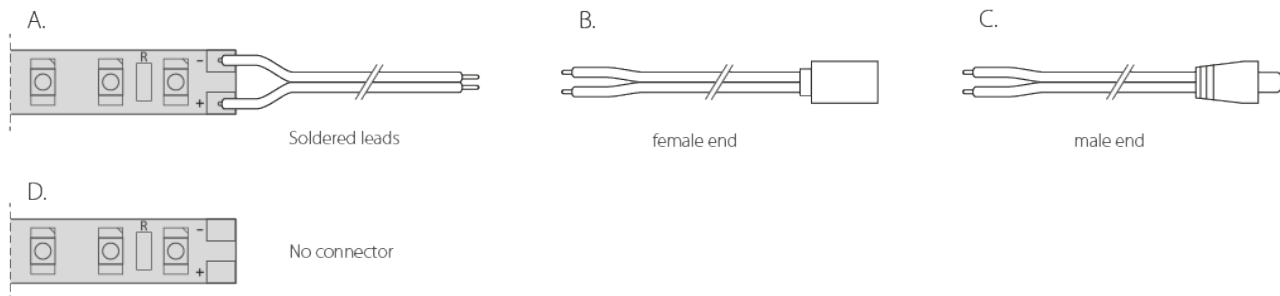
TECHNICAL DATA

Model	IP protection	Power consumption	Color temperature	Lumen output	Diode QTY per foot	Input voltage	Beam Angle	Max run length	LED width
WP-K-22-1910-HD-IP65-24V	IP 65 (gel coated)	2.84 W/ft	2200 K	210 lm/ft	81 pcs/ft	24 V	120 °	24'	10 mm
WP-K-25-1910-HD-IP65-24V	IP 65 (gel coated)	2.84 W/ft	2500 K	241 lm/ft	81 pcs/ft	24 V	120 °	24'	10 mm
WP-K-50-1910-HD-IP65-24V	IP 65 (gel coated)	2.84 W/ft	5000 K	288 lm/ft	81 pcs/ft	24 V	120 °	24'	10 mm

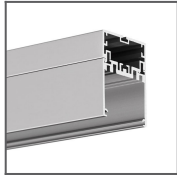


WIRE OPTIONS

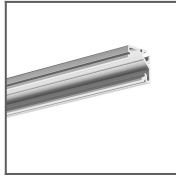
36"-72" wire leads (20 gauge jacketed wire)



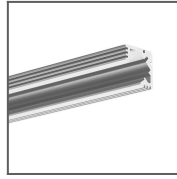
RELATED EXTRUSIONS



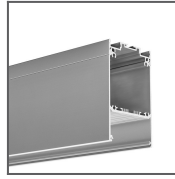
4050 Extrusion
Ref: 18050



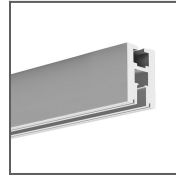
45-16 Extrusion
Ref: B8504ANODA



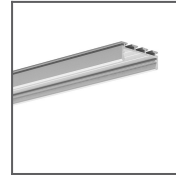
45-ALU Extrusion
Ref: B4023ANODA



DES Extrusion
Ref: 18030ANODA



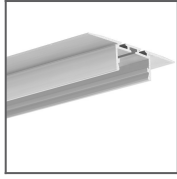
EX-ALU Extrusion
Ref: B1890ANODA



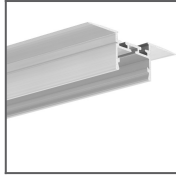
GIZA Extrusion
Ref: B5556ANODA



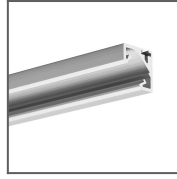
GIZA-DUO-LL
Extrusion
Ref: C2162



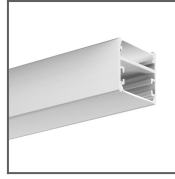
GIZA-LL-T
Extrusion
Ref: C2479



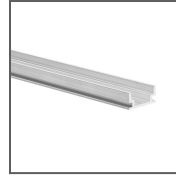
GIZA-LL-UST
Extrusion
Ref: C2724



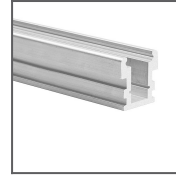
GLAD-45
Extrusion
Ref: B7009ANODA



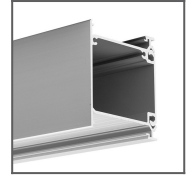
GLAZA-DUO
Extrusion
Ref: C3059



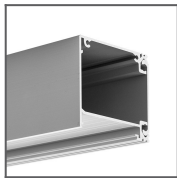
HR-ALU
Extrusion
Ref: B1889



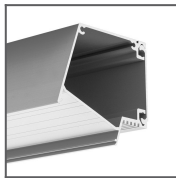
HR-LINE Extrusion
Ref: B3579



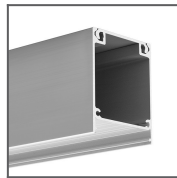
IDOL Extrusion
Ref: 18014ANODA



IKON Extrusion
Ref: 18013ANODA



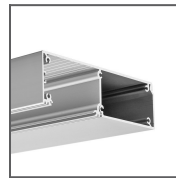
IMET Extrusion
Ref: 18012ANODA



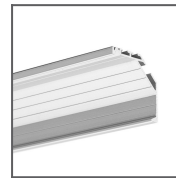
INTER Extrusion
Ref: 18011ANODA



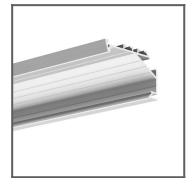
JAZ Extrusion
Ref: B8547ANODA



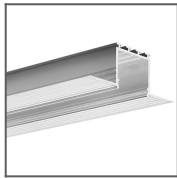
KIDES Extrusion
Ref: 18031ANODA



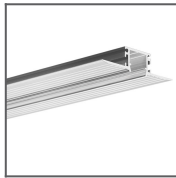
KOPRO Extrusion
Ref: B6367ANODA



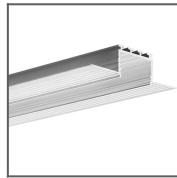
KOPRO-30
Extrusion
Ref: B7890ANODA



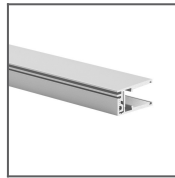
KOZEL Extrusion
Ref: B6454



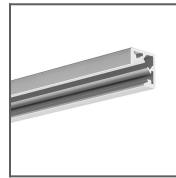
KOZMA Extrusion
Ref: 18040NA



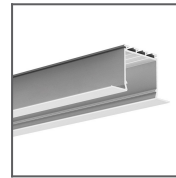
KOZUS Extrusion
Ref: B7823NA



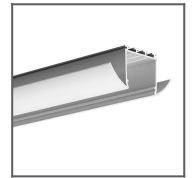
KRAV-810
Extrusion
Ref: 18016ANODA



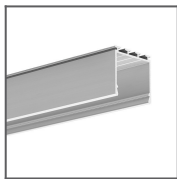
KUBIK-45
Extrusion
Ref: B7697ANODA



LARKO Extrusion
Ref: B5552ANODA



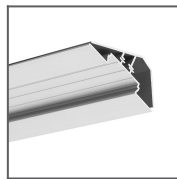
LESTO Extrusion
Ref: B5551ANODA



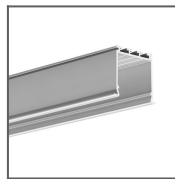
LIPOD Extrusion
Ref: B5554ANODA



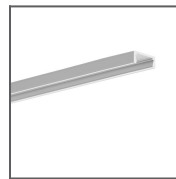
LIT-L Extrusion
Ref: 18033NA



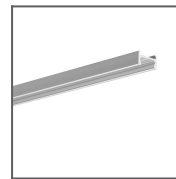
LOC-30 Extrusion
Ref: 18015ANODA



LOKOM Extrusion
Ref: B5553ANODA



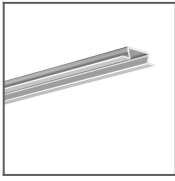
MICRO-ALU
Extrusion
Ref: B1888



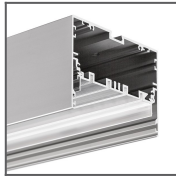
MICRO-H Extrusion
Ref: C0599ANODA



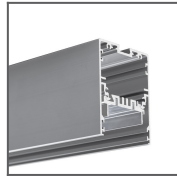
MICRO-HG
Extrusion
Ref: C1419



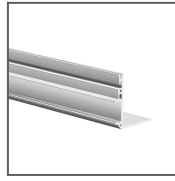
MICRO-NK
Extrusion
Ref: C1587



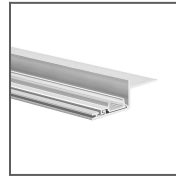
MOD-100
Extrusion
Ref: 18049



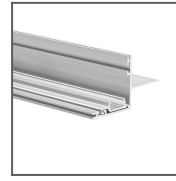
MOD-50
Extrusion
Ref: 18047



NISA-KON
Extrusion
Ref: 18027NA



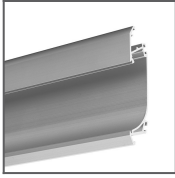
NISA-KRA
Extrusion
Ref: 18026NA



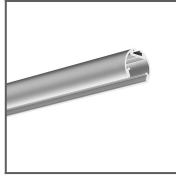
NISA-NI Extrusion
Ref: 18029NA



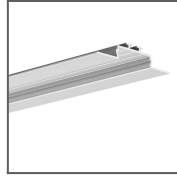
NISA-PLA
Extrusion
Ref: 18028NA



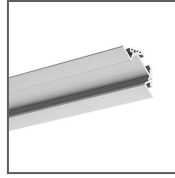
OBIT Extrusion
Ref:
W4826ANODA



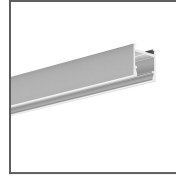
OLEK Extrusion
Ref:
B8505ANODA



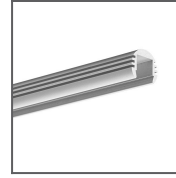
OPAC-30
Extrusion
Ref:
B6164ANODA



PAC-ALU
Extrusion
Ref:
B4370ANODA



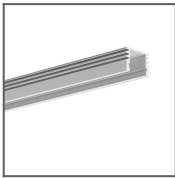
PDS-H Extrusion
Ref:
B9204ANODA



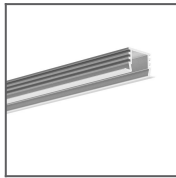
PDS-O Extrusion
Ref: B3777ANODA



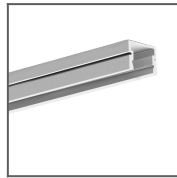
PDS-ZM
Extrusion
Ref:
B7696ANODA



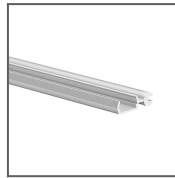
PDS4-ALU
Extrusion
Ref: B1718



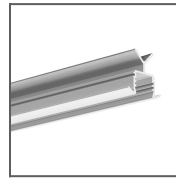
PDS4-K Extrusion
Ref:
B3776ANODA



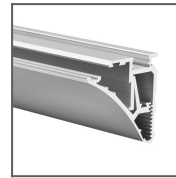
PDS4-PLUS
Extrusion
Ref: C1263



POLI Extrusion
Ref:
B7176ANODA



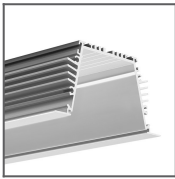
POR Extrusion
Ref:
B6144ANODA



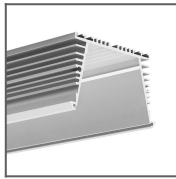
PULA Extrusion
Ref: 18035ANODA



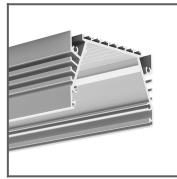
REGULOR
Extrusion
Ref:
B468+43ANODA



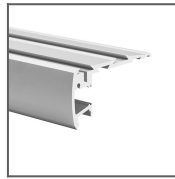
SEKODU
Extrusion
Ref:
B6597ANODA



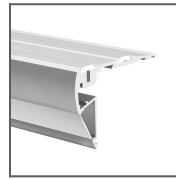
SEKOMA
Extrusion
Ref:
B6595ANODA



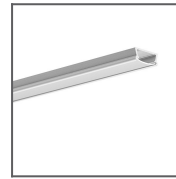
SEPOD Extrusion
Ref:
B6593ANODA



STEP Extrusion
Ref:
B4845ANODA



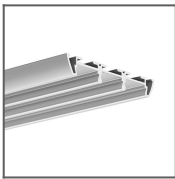
STEPUS
Extrusion
Ref:
18038ANODA



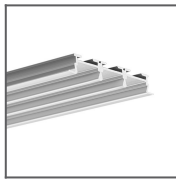
TAMI Extrusion
Ref:
B5390ANODA/Frosted
Cover



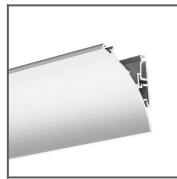
TAN-C5
Extrusion
Ref:
B5391/Frosted
Cover



TRIADA
Extrusion
Ref:
B4476ANODA



TRIADA-K
Extrusion
Ref:
B4477ANODA



WERKIN
Extrusion
Ref:
18025ANODA