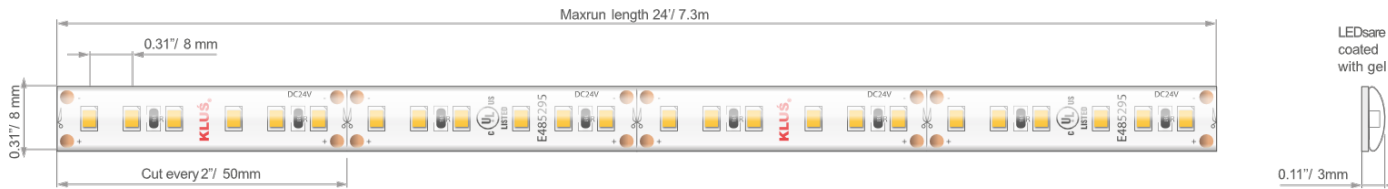


- UL Listed
- CRI 90+
- 3-Step MacAdam's ellipse, single binning



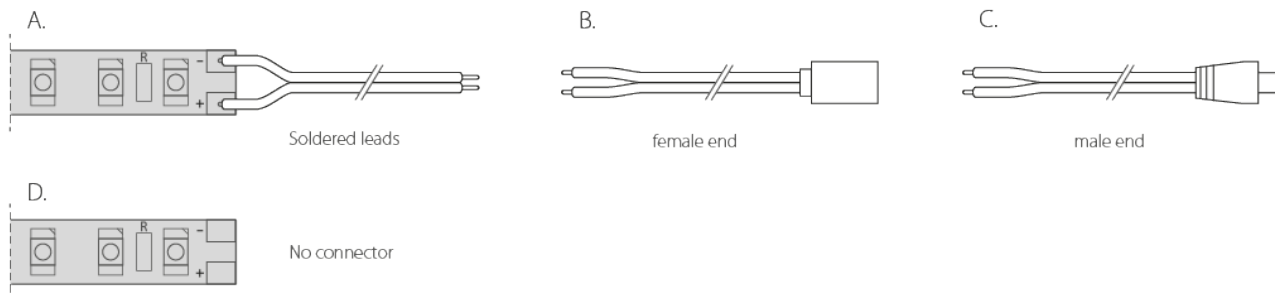
TECHNICAL DATA

Model	IP protection	Power consumption	Color temperature	Lumen output	Diode QTY per foot	Input voltage	Beam Angle	Max run length	LED width
WP-K-22-1220-IP65-24V	IP 65 (gel coated)	3 W/ft	2200 K	155 lm/ft	38 pcs/ft	24 V	120 °	16'4"	8 mm
WP-K-25-1220-IP65-24V	IP 65 (gel coated)	3 W/ft	2500 K	186 lm/ft	38 pcs/ft	24 V	120 °	16'4"	8 mm
WP-K-27-1220-IP65-24V	IP 65 (gel coated)	3 W/ft	2700 K	189 lm/ft	38 pcs/ft	24 V	120 °	16'4"	8 mm
WP-K-30-1220-IP65-24V	IP 65 (gel coated)	3 W/ft	3000 K	197 lm/ft	38 pcs/ft	24 V	120 °	16'4"	8 mm
WP-K-35-1220-IP65-24V	IP 65 (gel coated)	3 W/ft	3500 K	204 lm/ft	38 pcs/ft	24 V	120 °	16'4"	8 mm
WP-K-40-1220-IP65-24V	IP 65 (gel coated)	3 W/ft	4000 K	212 lm/ft	38 pcs/ft	24 V	120 °	16'4"	8 mm
WP-K-50-1220-IP65-24V	IP 65 (gel coated)	3 W/ft	5000 K	209 lm/ft	38 pcs/ft	24 V	120 °	16'4"	8 mm

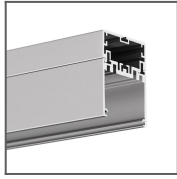
-4°F to 140°F
OPERATING TEMPERATURE
LEAD MERCURY
CONTENT
DIMMABLE
UV IR
RADIATION
OUTDOOR
IP 65
24V DC
POWER OUT
CE
RoHS COMPLIANT
CLOSET RATED

WIRE OPTIONS

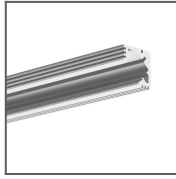
36"-72" wire leads (20 gauge jacketed wire)



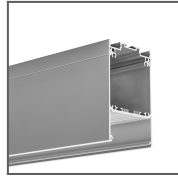
RELATED EXTRUSIONS



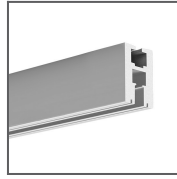
4050 Extrusion
Ref: 18050



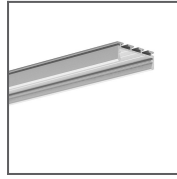
45-ALU Extrusion
Ref: B4023ANODA



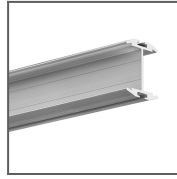
DES Extrusion
Ref: 18030ANODA



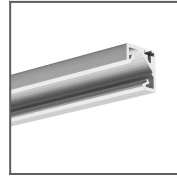
EX-ALU Extrusion
Ref: B1890ANODA



GIZA Extrusion
Ref: B5556ANODA



GIZA-DUO-LL
Extrusion
Ref: C2162



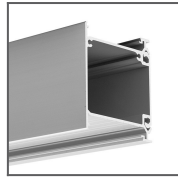
GLAD-45
Extrusion
Ref: B7009ANODA



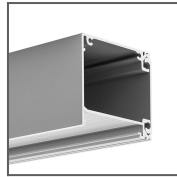
HR-ALU
Extrusion
Ref: B1889



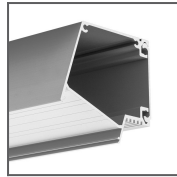
HR-LINE Extrusion
Ref: B3579



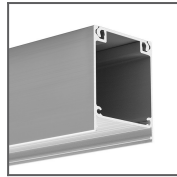
IDOL Extrusion
Ref: 18014ANODA



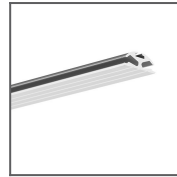
IKON Extrusion
Ref: 18013ANODA



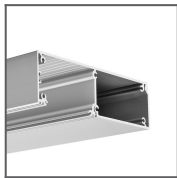
IMET Extrusion
Ref: 18012ANODA



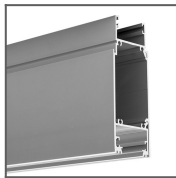
INTER Extrusion
Ref: 18011ANODA



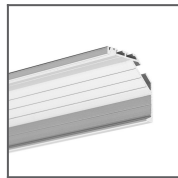
JAZ Extrusion
Ref: B8547ANODA



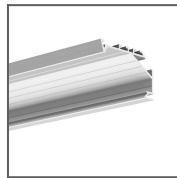
KIDES Extrusion
Ref: 18031ANODA



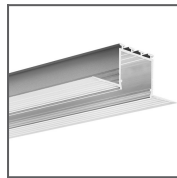
KIDES-DUO Extrusion
Ref: 18032ANODA



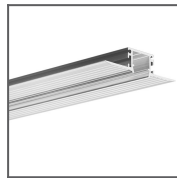
KOPRO Extrusion
Ref: B6367ANODA



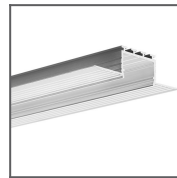
KOPRO-30
Extrusion
Ref: B7890ANODA



KOZEL Extrusion
Ref: B6454



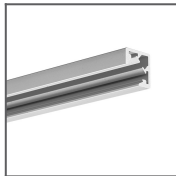
KOZMA Extrusion
Ref: 18040NA



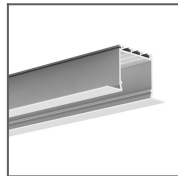
KOZUS Extrusion
Ref: B7823NA



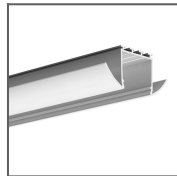
KRAV-810
Extrusion
Ref: 18016ANODA



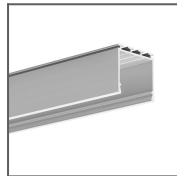
KUBIK-45 Extrusion
Ref: B7697ANODA



LARKO Extrusion
Ref: B5552ANODA



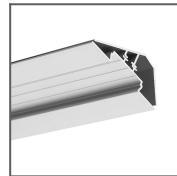
LESTO Extrusion
Ref: B5551ANODA



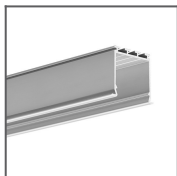
LIPOD Extrusion
Ref: B5554ANODA



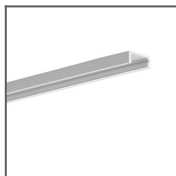
LIT-L Extrusion
Ref: 18033NA



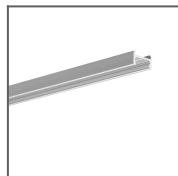
LOC-30 Extrusion
Ref: 18015ANODA



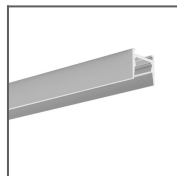
LOKOM Extrusion
Ref: B5553ANODA



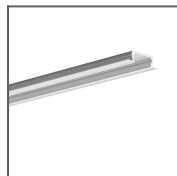
MICRO-ALU Extrusion
Ref: B1888



MICRO-H
Extrusion
Ref: C0599ANODA



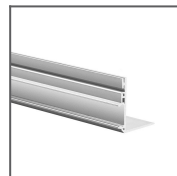
MICRO-HG
Extrusion
Ref: C1419



MICRO-K
Extrusion
Ref: B3775ANODA



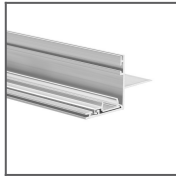
MICRO-NK
Extrusion
Ref: C1587



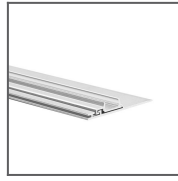
NISA-KON
Extrusion
Ref: 18027NA



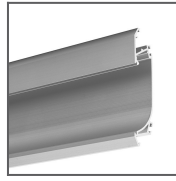
NISA-KRA
Extrusion
Ref: 18026NA



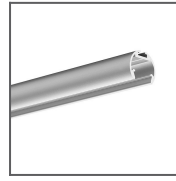
NISA-NI Extrusion
Ref: 18029NA



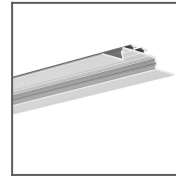
NISA-PLA
Extrusion
Ref: 18028NA



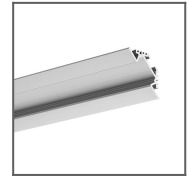
OBIT Extrusion
Ref:
W4826ANODA



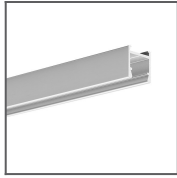
OLEK Extrusion
Ref:
B8505ANODA



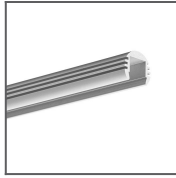
OPAC-30
Extrusion
Ref:
B6164ANODA



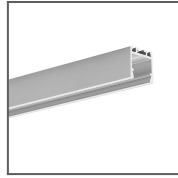
PAC-ALU
Extrusion
Ref:
B4370ANODA



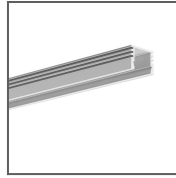
PDS-H Extrusion
Ref:
B9204ANODA



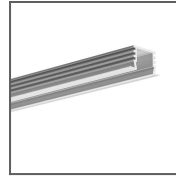
PDS-O Extrusion
Ref: B3777ANODA



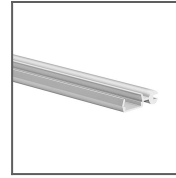
PDS-ZM
Extrusion
Ref:
B7696ANODA



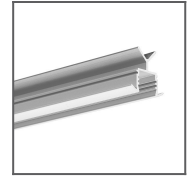
PDS4-ALU
Extrusion
Ref: B1718



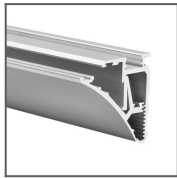
PDS4-K Extrusion
Ref:
B3776ANODA



POLI Extrusion
Ref:
B7176ANODA



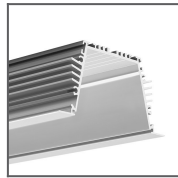
POR Extrusion
Ref:
B6144ANODA



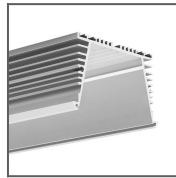
PULA Extrusion
Ref:
18035ANODA



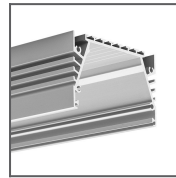
REGULOR Extrusion
Ref: B468+43ANODA



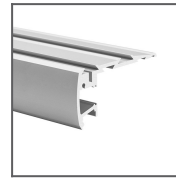
SEKODU
Extrusion
Ref:
B6597ANODA



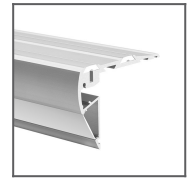
SEKOMA
Extrusion
Ref:
B6595ANODA



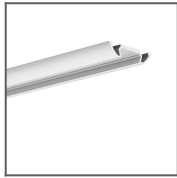
SEPOD Extrusion
Ref:
B6593ANODA



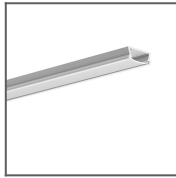
STEP Extrusion
Ref:
B4845ANODA



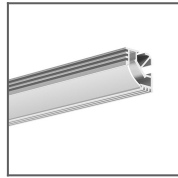
STEPUS
Extrusion
Ref:
18038ANODA



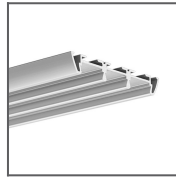
STOS-ALU
Extrusion
Ref:
B4369ANODA



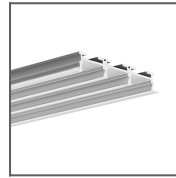
TAMI Extrusion
Ref:
B5390ANODA/Frosted
Cover



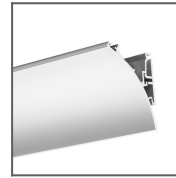
TAN-C5
Extrusion
Ref:
B5391/Frosted
Cover



TRIADA
Extrusion
Ref:
B4476ANODA



TRIADA-K
Extrusion
Ref:
B4477ANODA

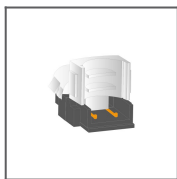


WERKIN
Extrusion
Ref:
18025ANODA

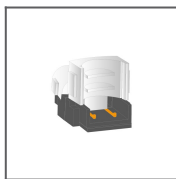
RELATED PRODUCTS

LED TAPES

WHITE LED STRIP CONNECTORS



C-SC-IP65
Ref: C-SC-IP65



C-SS-IP65
Ref: C-SS-IP65



C-MP
Ref: C-MP

WIRE CONNECTORS



C-MP
Ref: C-MP