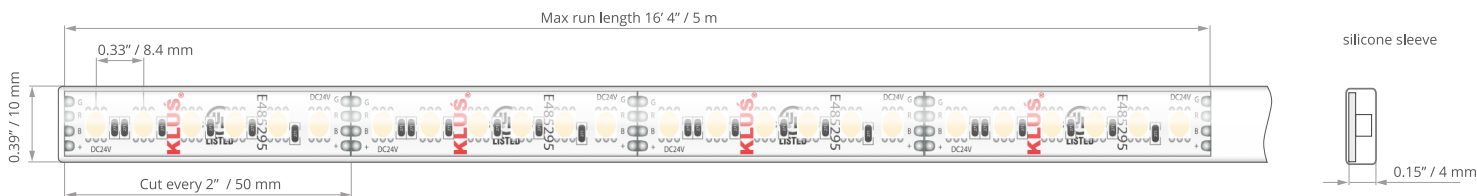
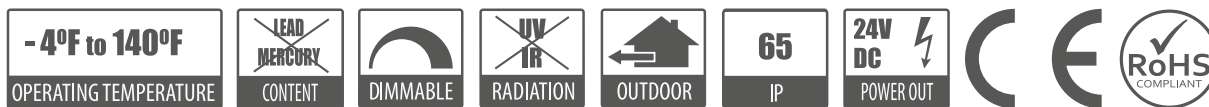


- UL Listed
- L70- Over 40,000 hours
- Reverse voltage protection
- Minimum 2oz copper PCB

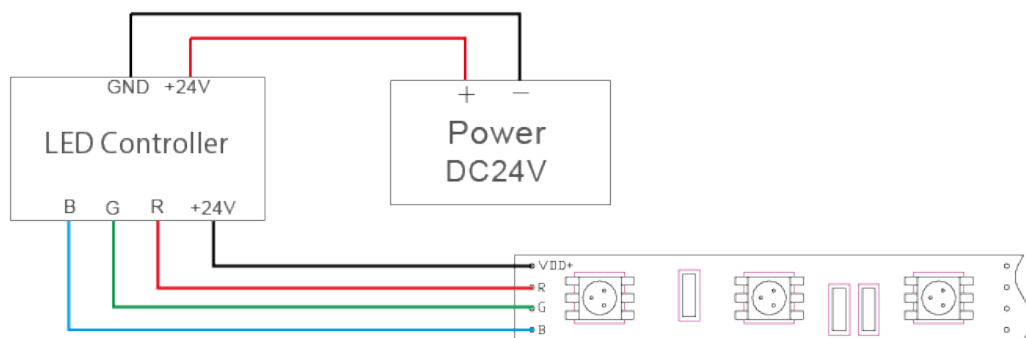


## TECHNICAL DATA

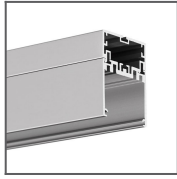
Model	IP protection	Power consumption	Color temperature	Lumen output	Diode QTY per foot	Input voltage	Beam Angle	Max run length	LED width
WP-K-1920-120-RGB-24V	IP 65 (silicon sleeve)	5.85 W/ft	Blue Green Red	183 lm/ft	38 pcs/ft	24 V	120 °	16'4"	10 mm



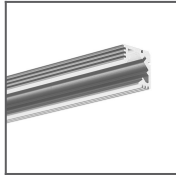
## WIRE OPTIONS



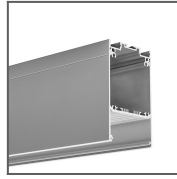
**RELATED EXTRUSIONS**



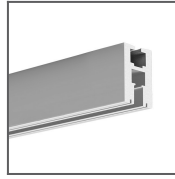
4050 Extrusion  
Ref: 18050



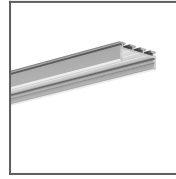
45-ALU Extrusion  
Ref: B4023ANODA



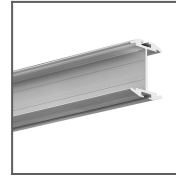
DES Extrusion  
Ref: 18030ANODA



EX-ALU Extrusion  
Ref: B1890ANODA



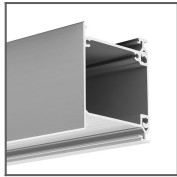
GIZA Extrusion  
Ref: B5556ANODA



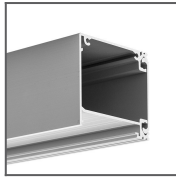
GIZA-DUO-LL  
Extrusion  
Ref: C2162



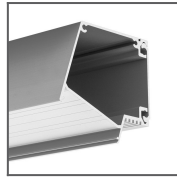
GLAD-45  
Extrusion  
Ref: B7009ANODA



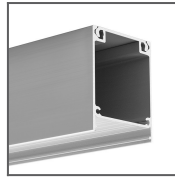
IDOL Extrusion  
Ref: 18014ANODA



IKON Extrusion  
Ref: 18013ANODA



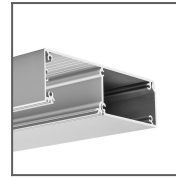
IMET Extrusion  
Ref: 18012ANODA



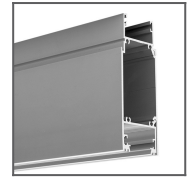
INTER Extrusion  
Ref: 18011ANODA



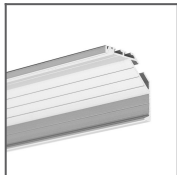
JAZ Extrusion  
Ref: B8547ANODA



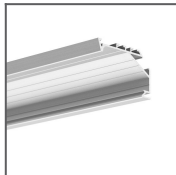
KIDES Extrusion  
Ref: 18031ANODA



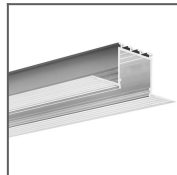
KIDES-DUO  
Extrusion  
Ref: 18032ANODA



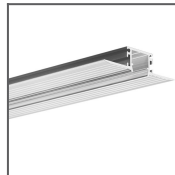
KOPRO Extrusion  
Ref: B6367ANODA



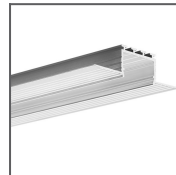
KOPRO-30  
Extrusion  
Ref: B7890ANODA



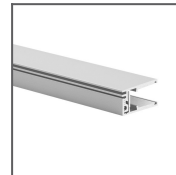
KOZEL Extrusion  
Ref: B6454



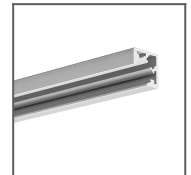
KOZMA Extrusion  
Ref: 18040NA



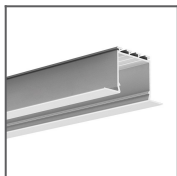
KOZUS Extrusion  
Ref: B7823NA



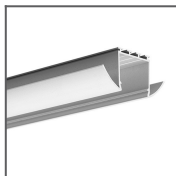
KRAV-810  
Extrusion  
Ref: 18016ANODA



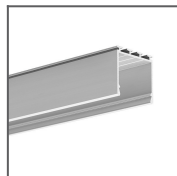
KUBIK-45  
Extrusion  
Ref: B7697ANODA



LARKO Extrusion  
Ref: B5552ANODA



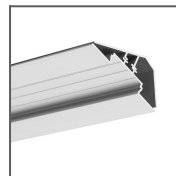
LESTO Extrusion  
Ref: B5551ANODA



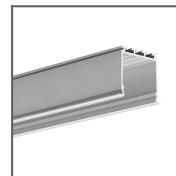
LIPOD Extrusion  
Ref: B5554ANODA



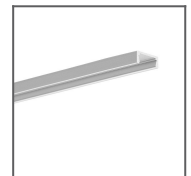
LIT-L Extrusion  
Ref: 18033NA



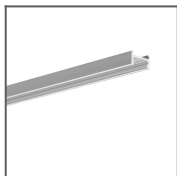
LOC-30 Extrusion  
Ref: 18015ANODA



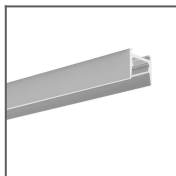
LOKOM Extrusion  
Ref: B5553ANODA



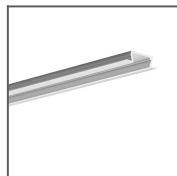
MICRO-ALU  
Extrusion  
Ref: B1888



MICRO-H  
Extrusion  
Ref: C0599ANODA



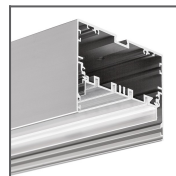
MICRO-HG  
Extrusion  
Ref: C1419



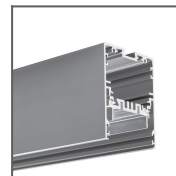
MICRO-K  
Extrusion  
Ref: B3775ANODA



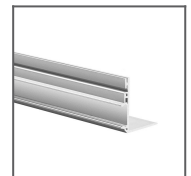
MICRO-NK Extrusion  
Ref: C1587



MOD-100  
Extrusion  
Ref: 18049



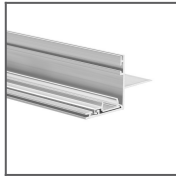
MOD-50  
Extrusion  
Ref: 18047



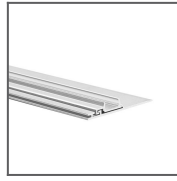
NISA-KON  
Extrusion  
Ref: 18027NA



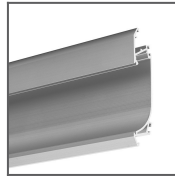
NISA-KRA  
Extrusion  
Ref: 18026NA



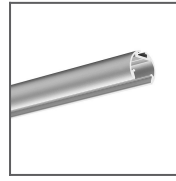
NISA-NI  
Extrusion  
Ref: 18029NA



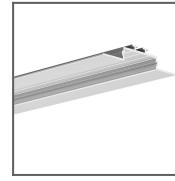
NISA-PLA  
Extrusion  
Ref: 18028NA



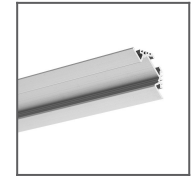
OBIT Extrusion  
Ref: W4826ANODA



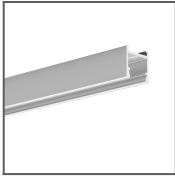
OLEK Extrusion  
Ref:  
B8505ANODA



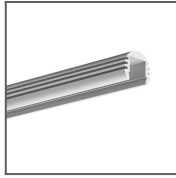
OPAC-30  
Extrusion  
Ref:  
B6164ANODA



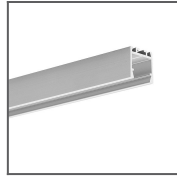
PAC-ALU  
Extrusion  
Ref:  
B4370ANODA



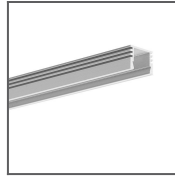
PDS-H Extrusion  
Ref:  
B9204ANODA



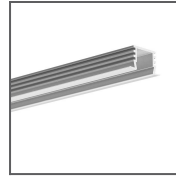
PDS-O Extrusion  
Ref:  
B3777ANODA



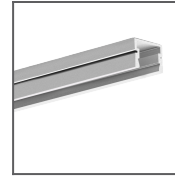
PDS-ZM  
Extrusion  
Ref:  
B7696ANODA



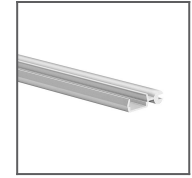
PDS4-ALU Extrusion  
Ref: B1718



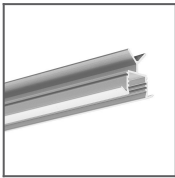
PDS4-K Extrusion  
Ref:  
B3776ANODA



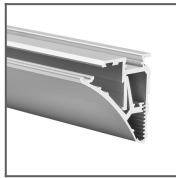
PDS4-PLUS  
Extrusion  
Ref: C1263



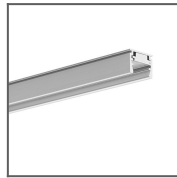
POLI Extrusion  
Ref:  
B7176ANODA



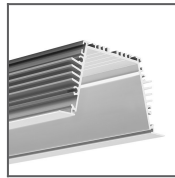
POR Extrusion  
Ref:  
B6144ANODA



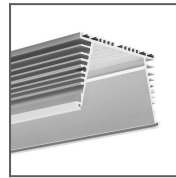
PULA Extrusion  
Ref:  
18035ANODA



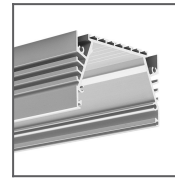
REGULOR  
Extrusion  
Ref:  
B468+43ANODA



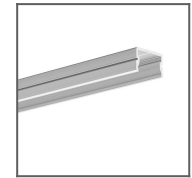
SEKODU Extrusion  
Ref: B6597ANODA



SEKOMA  
Extrusion  
Ref:  
B6595ANODA



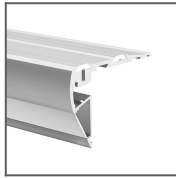
SEPOD Extrusion  
Ref:  
B6593ANODA



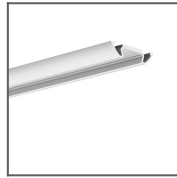
SILER Extrusion  
Ref:  
B9325ANODA



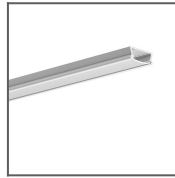
STEP Extrusion  
Ref:  
B4845ANODA



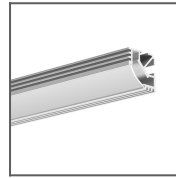
STEPUS  
Extrusion  
Ref:  
18038ANODA



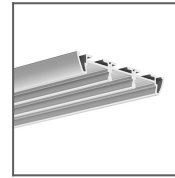
STOS-ALU  
Extrusion  
Ref:  
B4369ANODA



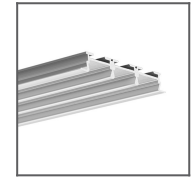
TAMI Extrusion  
Ref:  
B5390ANODA/Frosted  
Cover



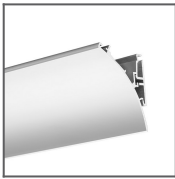
TAN-C5  
Extrusion  
Ref:  
B5391/Frosted  
Cover



TRIADA  
Extrusion  
Ref:  
B4476ANODA



TRIADA-K  
Extrusion  
Ref:  
B4477ANODA



WERKIN  
Extrusion  
Ref:  
18025ANODA