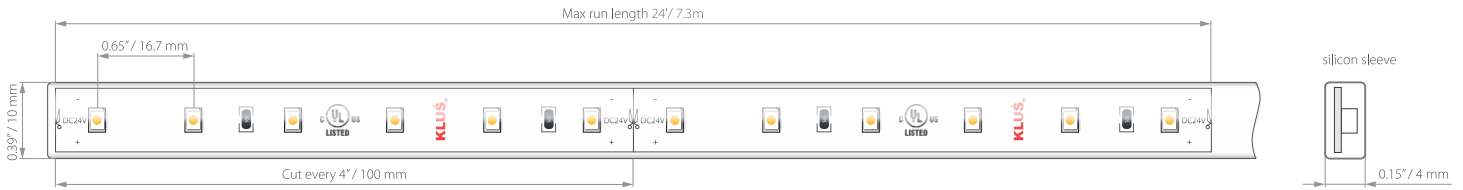


- UL Listed
- CRI 95+
- 2-Step MacAdam's ellipse, single binning
- L70- Over 50,000 hours
- R9 up to 97
- Reverse voltage protection
- Minimum 2oz copper PCB



TECHNICAL DATA

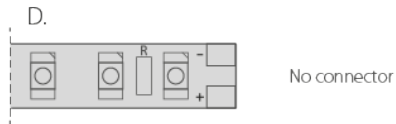
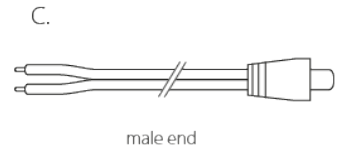
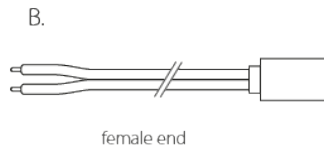
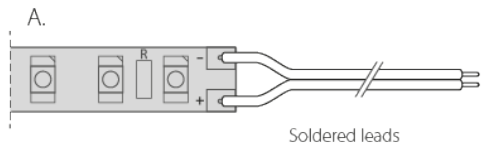
Model	Chip	IP protection	Power consumption	Color temperature	Lumen output	Diode QTY per foot	Input voltage	Beam Angle	Max run length	LED width
WP-K-CR-22-1210-24V	Epistar 3528	IP 65 (silicon sleeve)	1.5 W/ft	2200 K	88 lm/ft	18 pcs/ft	24 V	120 °	24'	10 mm
WP-K-CR-25-1210-24V	Epistar 3528	IP 65 (silicon sleeve)	1.5 W/ft	2500 K	93 lm/ft	18 pcs/ft	24 V	120 °	24'	10 mm
WP-K-CR-27-1210-24V	Epistar 3528	IP 65 (silicon sleeve)	1.5 W/ft	2700 k	95 lm/ft	18 pcs/ft	24 V	120 °	24'	10 mm
WP-K-CR-30-1210-24V	Epistar 3528	IP 65 (silicon sleeve)	1.5 W/ft	3000 K	98 lm/ft	18 pcs/ft	24 V	120 °	24'	10 mm
WP-K-CR-35-1210-24V	Epistar 3528	IP 65 (silicon sleeve)	1.5 W/ft	3500 K	106 lm/ft	18 pcs/ft	24 V	120 °	24'	10 mm
WP-K-CR-40-1210-24V	Epistar 3528	IP 65 (silicon sleeve)	1.5 W/ft	4000 K	106 lm/ft	18 pcs/ft	24 V	120 °	24'	10 mm
WP-K-CR-50-1210-24V	Epistar 3528	IP 65 (silicon sleeve)	1.5 W/ft	5000 K	105 lm/ft	18 pcs/ft	24 V	120 °	24'	10 mm



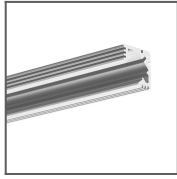
Closet Rated

WIRE OPTIONS

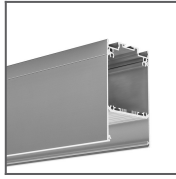
36"-72" wire leads (20 gauge Jacketed wire)



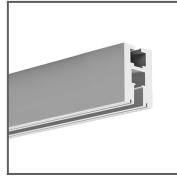
RELATED EXTRUSIONS



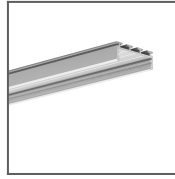
45-ALU Extrusion
Ref: B4023ANODA



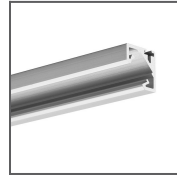
DES Extrusion
Ref: 18030ANODA



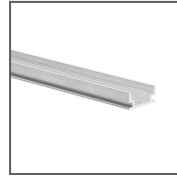
EX-ALU Extrusion
Ref: B1890ANODA



GIZA Extrusion
Ref: B5556ANODA



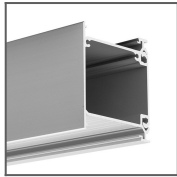
GLAD-45 Extrusion
Ref: B7009ANODA



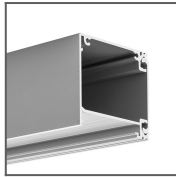
HR-ALU Extrusion
Ref: B1889



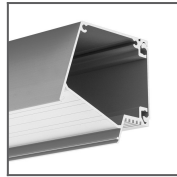
HR-LINE Extrusion
Ref: B3579



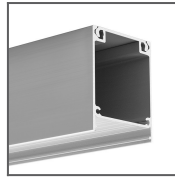
IDOL Extrusion
Ref: 18014ANODA



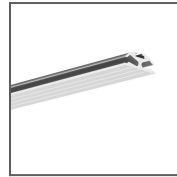
IKON Extrusion
Ref: 18013ANODA



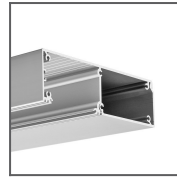
IMET Extrusion
Ref: 18012ANODA



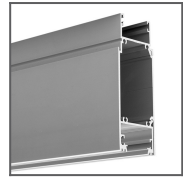
INTER Extrusion
Ref: 18011ANODA



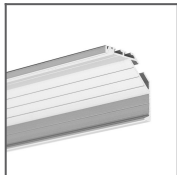
JAZ Extrusion
Ref: B8547ANODA



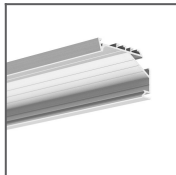
KIDES Extrusion
Ref: 18031ANODA



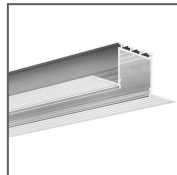
KIDES-DUO Extrusion
Ref: 18032ANODA



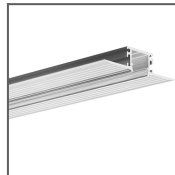
KOPRO Extrusion
Ref: B6367ANODA



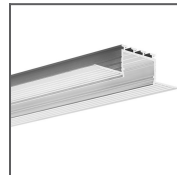
KOPRO-30 Extrusion
Ref: B7890ANODA



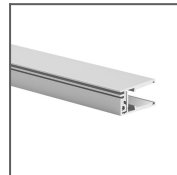
KOZEL Extrusion
Ref: B6454



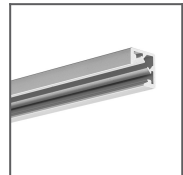
KOZMA Extrusion
Ref: 18040NA



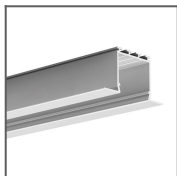
KOZUS Extrusion
Ref: B7823NA



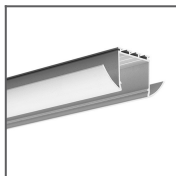
KRAV-810 Extrusion
Ref: 18016ANODA



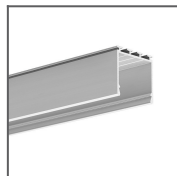
KUBIK-45 Extrusion
Ref: B7697ANODA



LARKO Extrusion
Ref: B5552ANODA



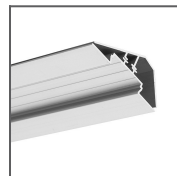
LESTO Extrusion
Ref: B5551ANODA



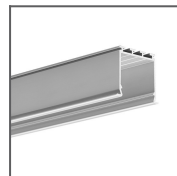
LIPOD Extrusion
Ref: B5554ANODA



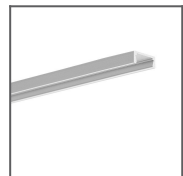
LIT-L Extrusion
Ref: 18033NA



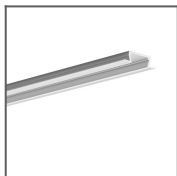
LOC-30 Extrusion
Ref: 18015ANODA



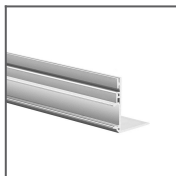
LOKOM Extrusion
Ref: B5553ANODA



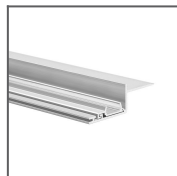
MICRO-ALU Extrusion
Ref: B1888



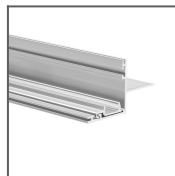
MICRO-K Extrusion
Ref: B3775ANODA



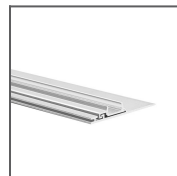
NISA-KON Extrusion
Ref: 18027NA



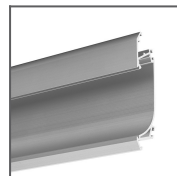
NISA-KRA Extrusion
Ref: 18026NA



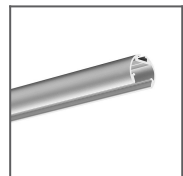
NISA-NI Extrusion
Ref: 18029NA



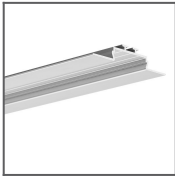
NISA-PLA Extrusion
Ref: 18028NA



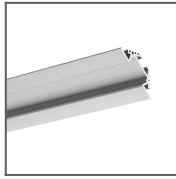
OBIT Extrusion
Ref: W4826ANODA



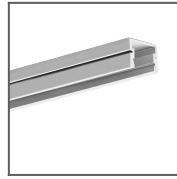
OLEK Extrusion
Ref: B8505ANODA



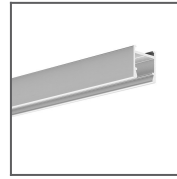
OPAC-30
Extrusion
Ref:
B6164ANODA



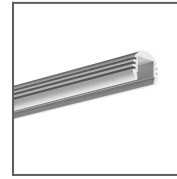
PAC-ALU
Extrusion
Ref:
B4370ANODA



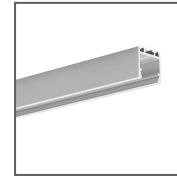
PDS-4-PLUS
Extrusion
Ref: C1263



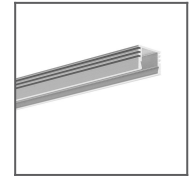
PDS-H Extrusion
Ref:
B9204ANODA



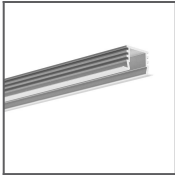
PDS-O Extrusion
Ref:
B3777ANODA



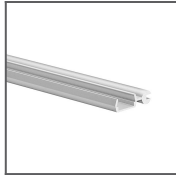
PDS-ZM Extrusion
Ref: B7696ANODA



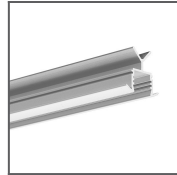
PDS4-ALU
Extrusion
Ref: B1718



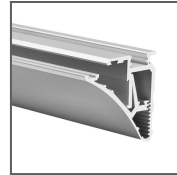
PDS4-K Extrusion
Ref:
B3776ANODA



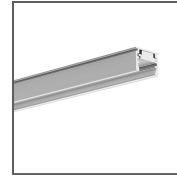
POLI Extrusion
Ref:
B7176ANODA



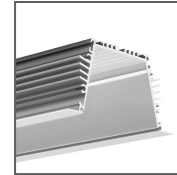
POR Extrusion
Ref:
B6144ANODA



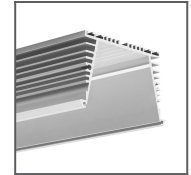
PULA Extrusion
Ref:
18035ANODA



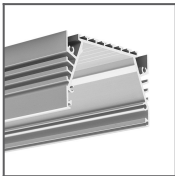
REGULOR
Extrusion
Ref:
B468+43ANODA



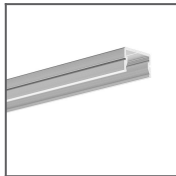
SEKODU Extrusion
Ref: B6597ANODA



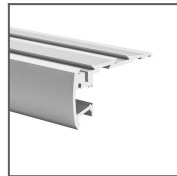
SEKOMA
Extrusion
Ref:
B6595ANODA



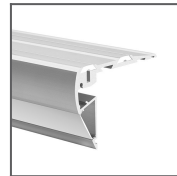
SEPOD Extrusion
Ref:
B6593ANODA



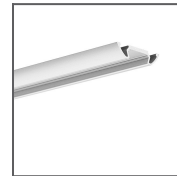
SILER Extrusion
Ref:
B9325ANODA



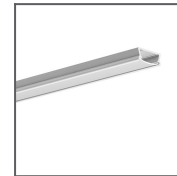
STEP Extrusion
Ref:
B4845ANODA



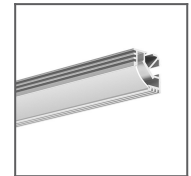
STEPUS
Extrusion
Ref:
18038ANODA



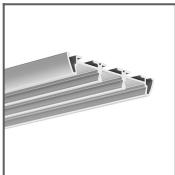
STOS-ALU
Extrusion
Ref:
B4369ANODA



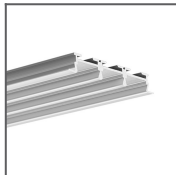
TAMI Extrusion
Ref:
B5390ANODA/Frosted
Cover



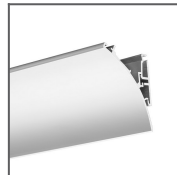
TAN-C5
Extrusion
Ref:
B5391/Frosted
Cover



TRIADA
Extrusion
Ref:
B4476ANODA



TRIADA-K
Extrusion
Ref:
B4477ANODA



WERKIN
Extrusion
Ref:
18025ANODA