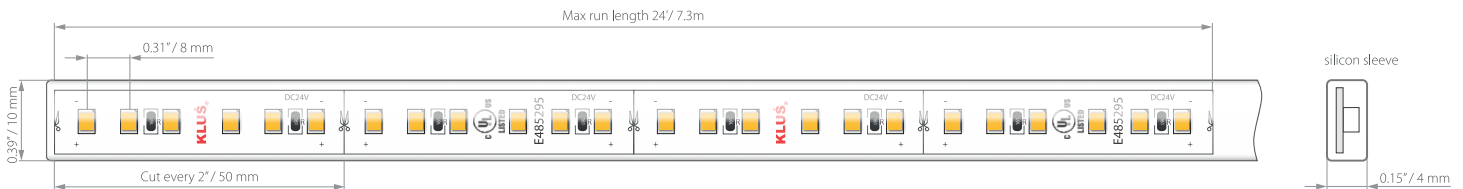


- UL Listed
- CRI 95+
- 2-Step MacAdam's ellipse, single binning
- L70- Over 50,000 hours
- R9 up to 94
- Reverse voltage protection
- Minimum 2oz copper PCB

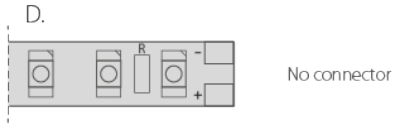
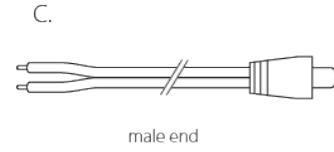
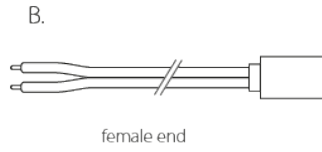
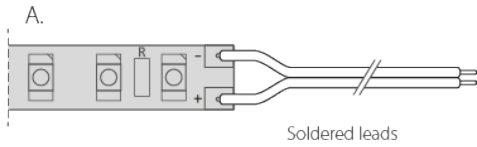


**TECHNICAL DATA**

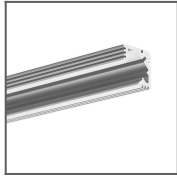
Model	Chip	IP protection	Power consumption	Color temperature	Lumen output	Diode QTY per foot	Input voltage	Beam Angle	Max run length	LED width
WP-K-CR-22-1220-24V	Epistar 3528	IP 65 (silicon sleeve)	3 W/ft	2200 K	171 lm/ft	38 pcs/ft	24 V	120 °	24'	10 mm
WP-K-CR-25-1220-24V	Epistar 3528	IP 65 (silicon sleeve)	3 W/ft	2500 K	178 lm/ft	38 pcs/ft	24 V	120 °	24'	10 mm
WP-K-CR-27-1220-24V	Epistar 3528	IP 65 (silicon sleeve)	3 W/ft	2700 k	182 lm/ft	38 pcs/ft	24 V	120 °	24'	10 mm
WP-K-CR-30-1220-24V	Epistar 3528	IP 65 (silicon sleeve)	3 W/ft	3000 K	191 lm/ft	38 pcs/ft	24 V	120 °	24'	8 mm
WP-K-CR-35-1220-24V	Epistar 3528	IP 65 (silicon sleeve)	3 W/ft	3500 K	208 lm/ft	38 pcs/ft	24 V	120 °	24'	10 mm
WP-K-CR-40-1220-24V	Epistar 3528	IP 65 (silicon sleeve)	3 W/ft	4000 K	210 lm/ft	38 pcs/ft	24 V	120 °	24'	10 mm
WP-K-CR-50-1220-24V	Epistar 3528	IP 65 (silicon sleeve)	3 W/ft	5000 K	254 lm/ft	38 pcs/ft	24 V	120 °	24'	10 mm

**WIRE OPTIONS**

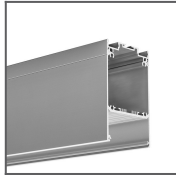
36"-72" wire leads (20 gauge Jacketed wire)



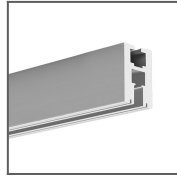
**RELATED EXTRUSIONS**



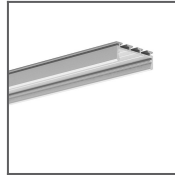
45-ALU Extrusion  
Ref: B4023ANODA



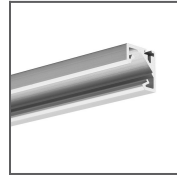
DES Extrusion  
Ref: 18030ANODA



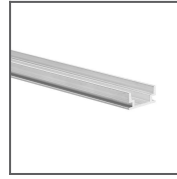
EX-ALU Extrusion  
Ref: B1890ANODA



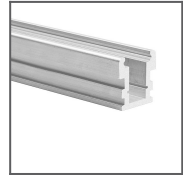
GIZA Extrusion  
Ref: B5556ANODA



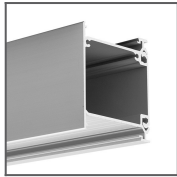
GLAD-45 Extrusion  
Ref: B7009ANODA



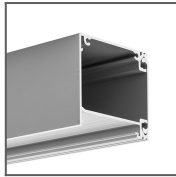
HR-ALU Extrusion  
Ref: B1889



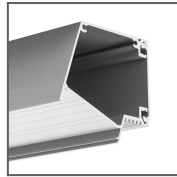
HR-LINE Extrusion  
Ref: B3579



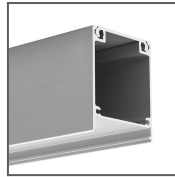
IDOL Extrusion  
Ref: 18014ANODA



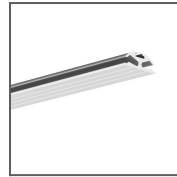
IKON Extrusion  
Ref: 18013ANODA



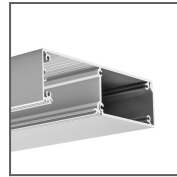
IMET Extrusion  
Ref: 18012ANODA



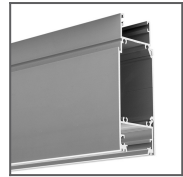
INTER Extrusion  
Ref: 18011ANODA



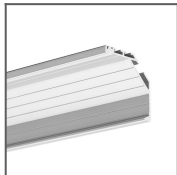
JAZ Extrusion  
Ref: B8547ANODA



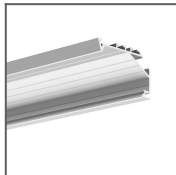
KIDES Extrusion  
Ref: 18031ANODA



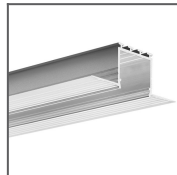
KIDES-DUO Extrusion  
Ref: 18032ANODA



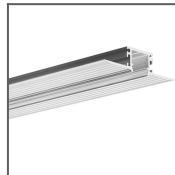
KOPRO Extrusion  
Ref: B6367ANODA



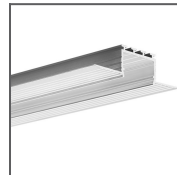
KOPRO-30 Extrusion  
Ref: B7890ANODA



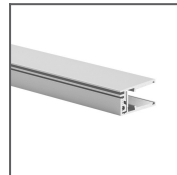
KOZEL Extrusion  
Ref: B6454



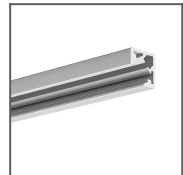
KOZMA Extrusion  
Ref: 18040NA



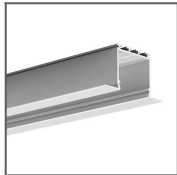
KOZUS Extrusion  
Ref: B7823NA



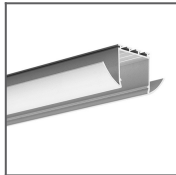
KRAV-810 Extrusion  
Ref: 18016ANODA



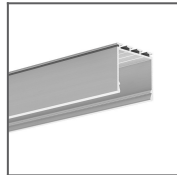
KUBIK-45 Extrusion  
Ref: B7697ANODA



LARKO Extrusion  
Ref: B5552ANODA



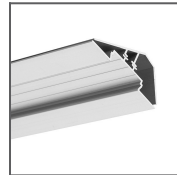
LESTO Extrusion  
Ref: B5551ANODA



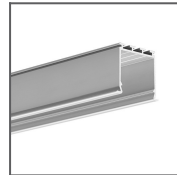
LIPOD Extrusion  
Ref: B5554ANODA



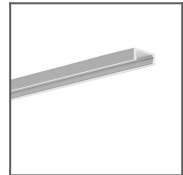
LIT-L Extrusion  
Ref: 18033NA



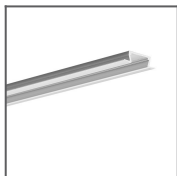
LOC-30 Extrusion  
Ref: 18015ANODA



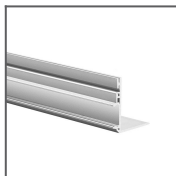
LOKOM Extrusion  
Ref: B5553ANODA



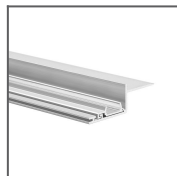
MICRO-ALU Extrusion  
Ref: B1888



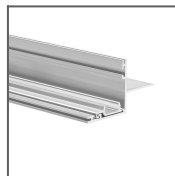
MICRO-K Extrusion  
Ref: B3775ANODA



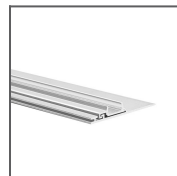
NISA-KON Extrusion  
Ref: 18027NA



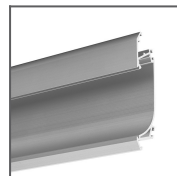
NISA-KRA Extrusion  
Ref: 18026NA



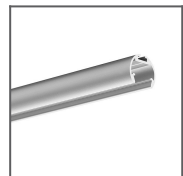
NISA-NI Extrusion  
Ref: 18029NA



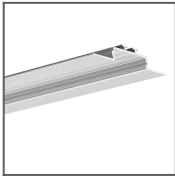
NISA-PLA Extrusion  
Ref: 18028NA



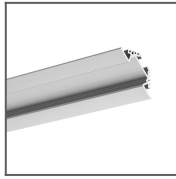
OBIT Extrusion  
Ref: W4826ANODA



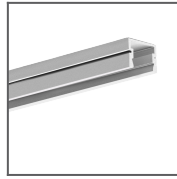
OLEK Extrusion  
Ref: B8505ANODA



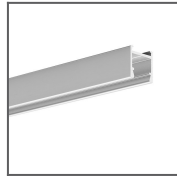
OPAC-30  
Extrusion  
Ref:  
B6164ANODA



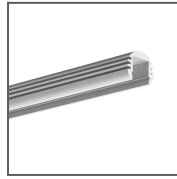
PAC-ALU  
Extrusion  
Ref:  
B4370ANODA



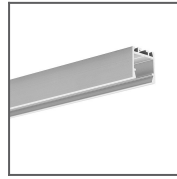
PDS-4-PLUS  
Extrusion  
Ref: C1263



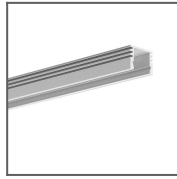
PDS-H Extrusion  
Ref:  
B9204ANODA



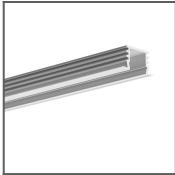
PDS-O Extrusion  
Ref:  
B3777ANODA



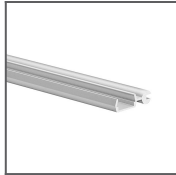
PDS-ZM Extrusion  
Ref: B7696ANODA



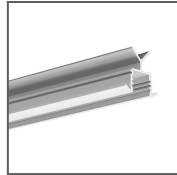
PDS4-ALU  
Extrusion  
Ref: B1718



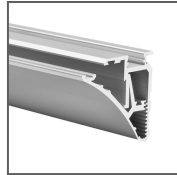
PDS4-K Extrusion  
Ref:  
B3776ANODA



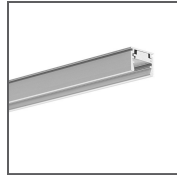
POLI Extrusion  
Ref:  
B7176ANODA



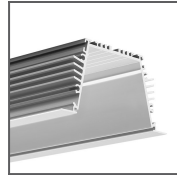
POR Extrusion  
Ref:  
B6144ANODA



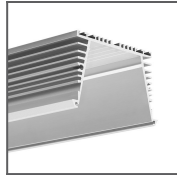
PULA Extrusion  
Ref:  
18035ANODA



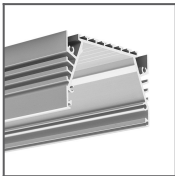
REGULOR  
Extrusion  
Ref:  
B468+43ANODA



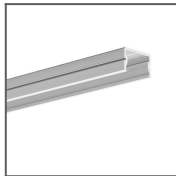
SEKODU Extrusion  
Ref: B6597ANODA



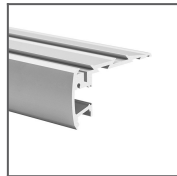
SEKOMA  
Extrusion  
Ref:  
B6595ANODA



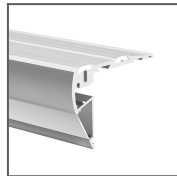
SEPOD Extrusion  
Ref:  
B6593ANODA



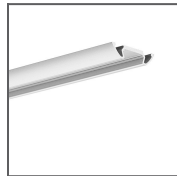
SILER Extrusion  
Ref:  
B9325ANODA



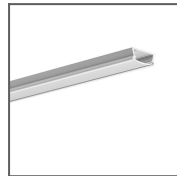
STEP Extrusion  
Ref:  
B4845ANODA



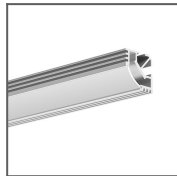
STEPUS  
Extrusion  
Ref:  
18038ANODA



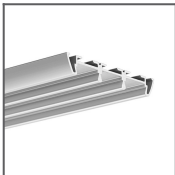
STOS-ALU  
Extrusion  
Ref:  
B4369ANODA



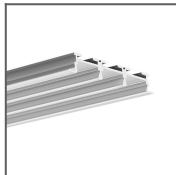
TAMI Extrusion  
Ref:  
B5390ANODA/Frosted  
Cover



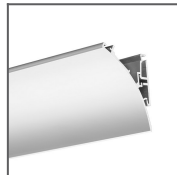
TAN-C5  
Extrusion  
Ref:  
B5391/Frosted  
Cover



TRIADA  
Extrusion  
Ref:  
B4476ANODA



TRIADA-K  
Extrusion  
Ref:  
B4477ANODA



WERKIN  
Extrusion  
Ref:  
18025ANODA